

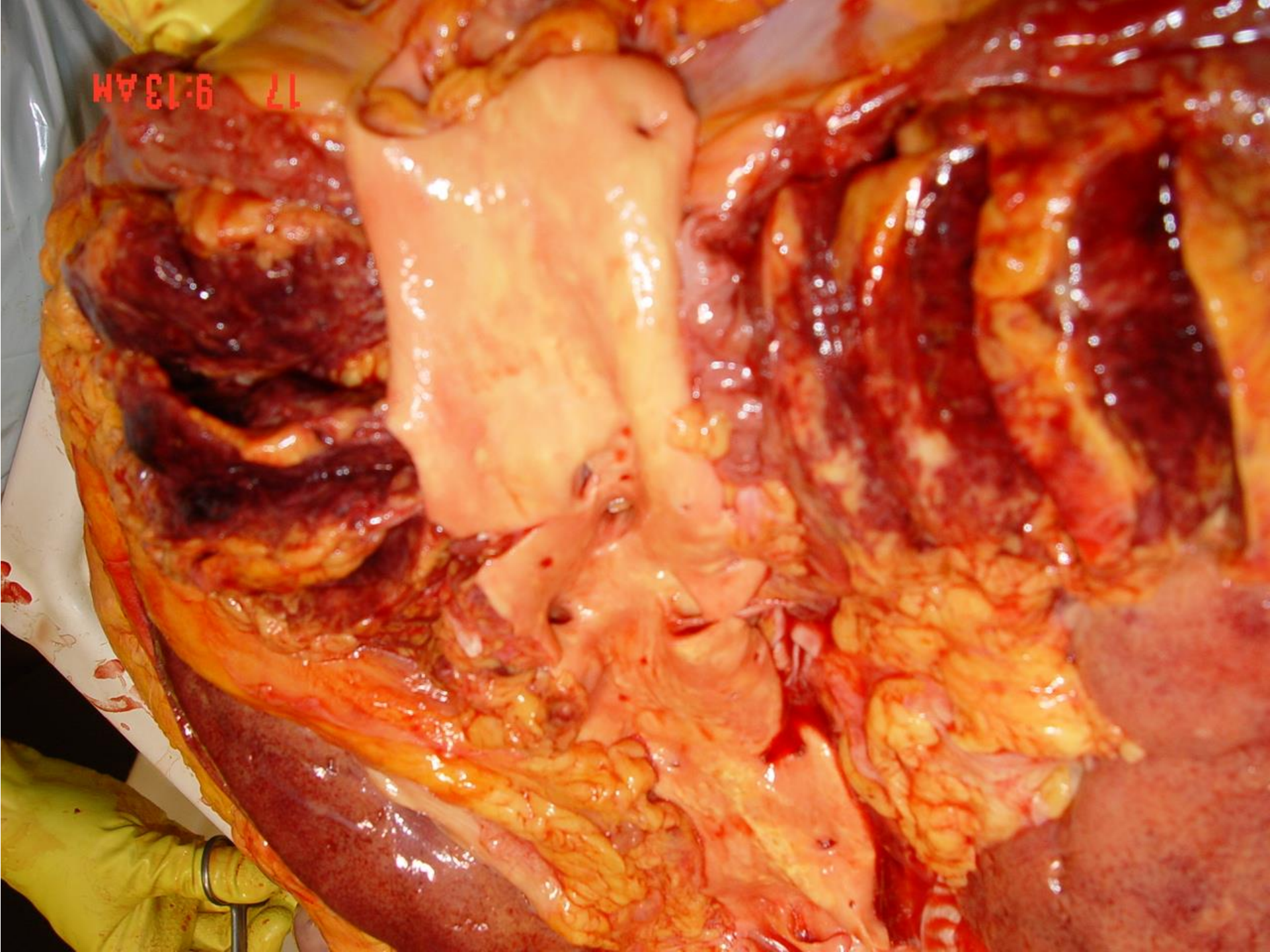
diffuses großzelliges z.T. anaplastisches B-Zell-Lymphom (DLBCL)

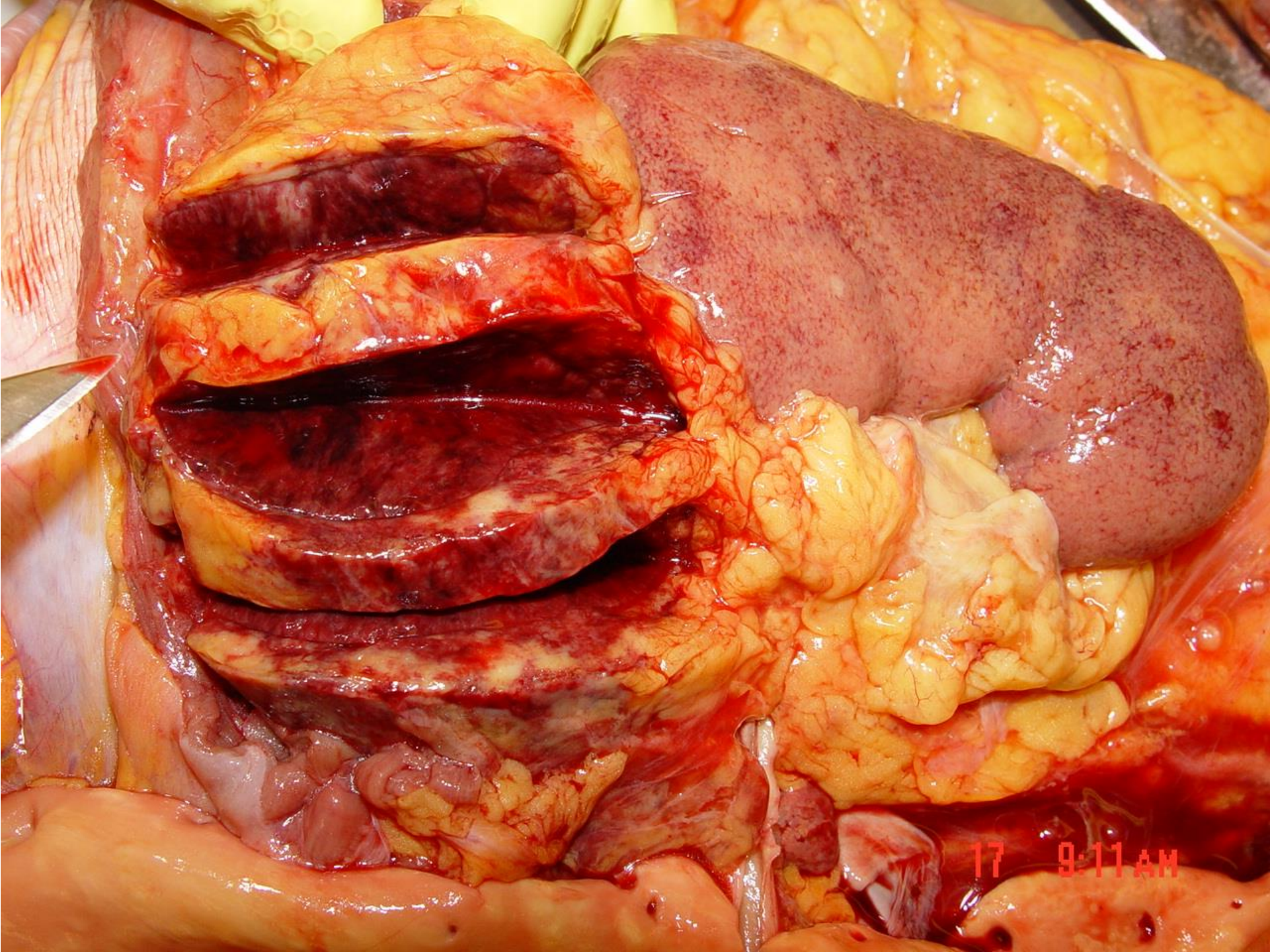
Falldemonstration männlich 53 Jahre alt

1. Generalisiertes diffuses großzelliges z.T. anaplastisches B-Zell-Lymphom
2. Dekompensierter Hypertonus mit Links-Rechtsherz-Insuffizienz
3. Geringgradiges chronisch-substantielles Lungenemphysem
4. Todesursache: Tumorintoxikation durch generalisiertes anaplastisches B-Zell-Lymphom und ausgedehnte pontine Myelinolyse

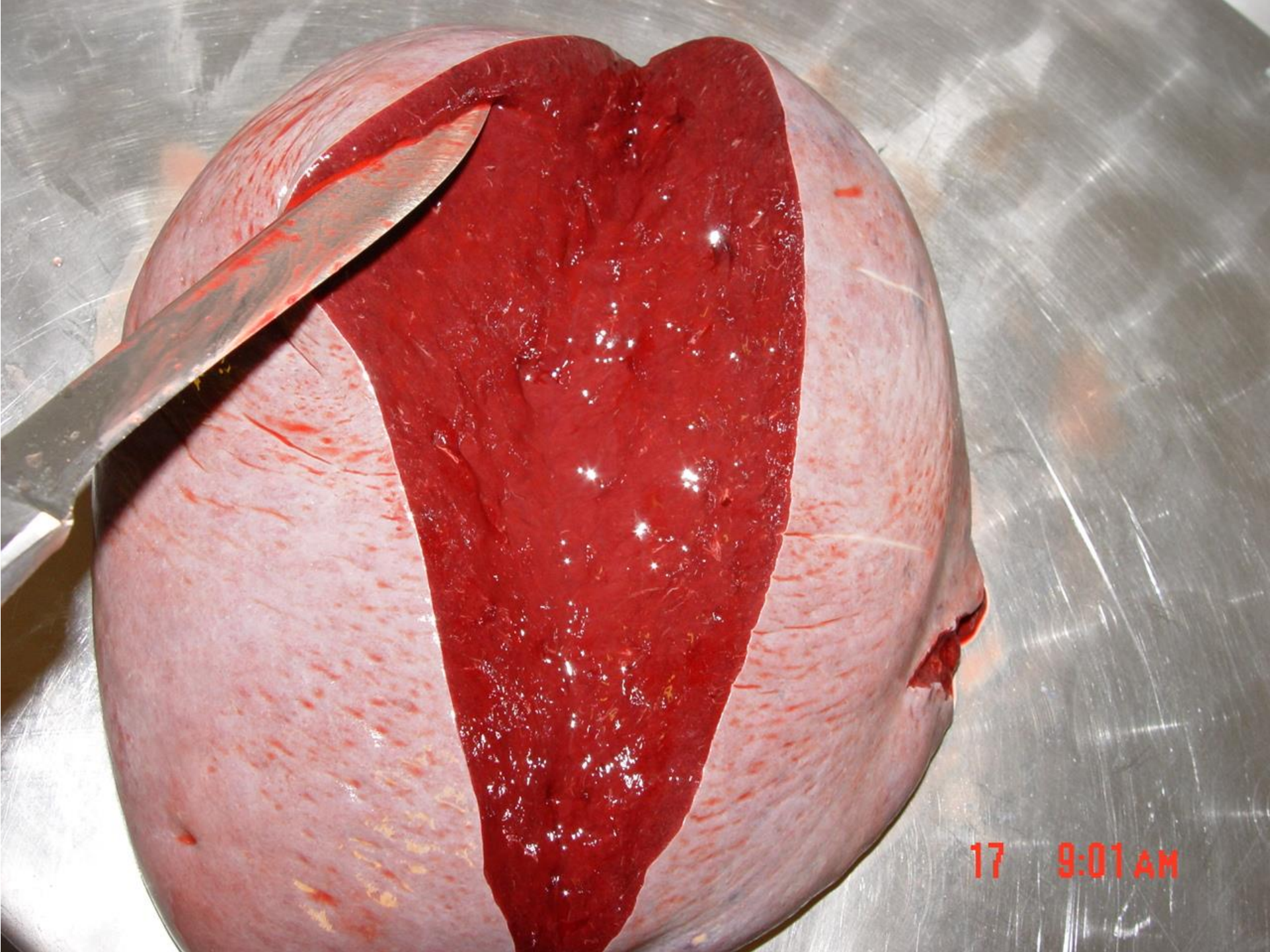
Lymphom-Manifestationen :

- Lymphknoten zervikal, paraaortal-thorakal und paraaortal-abdominal
- Nebenniere bds.
- Milz
- Dünndarm
- subhepatisch
- epikardial
- Nieren bds.
- Knochenmark

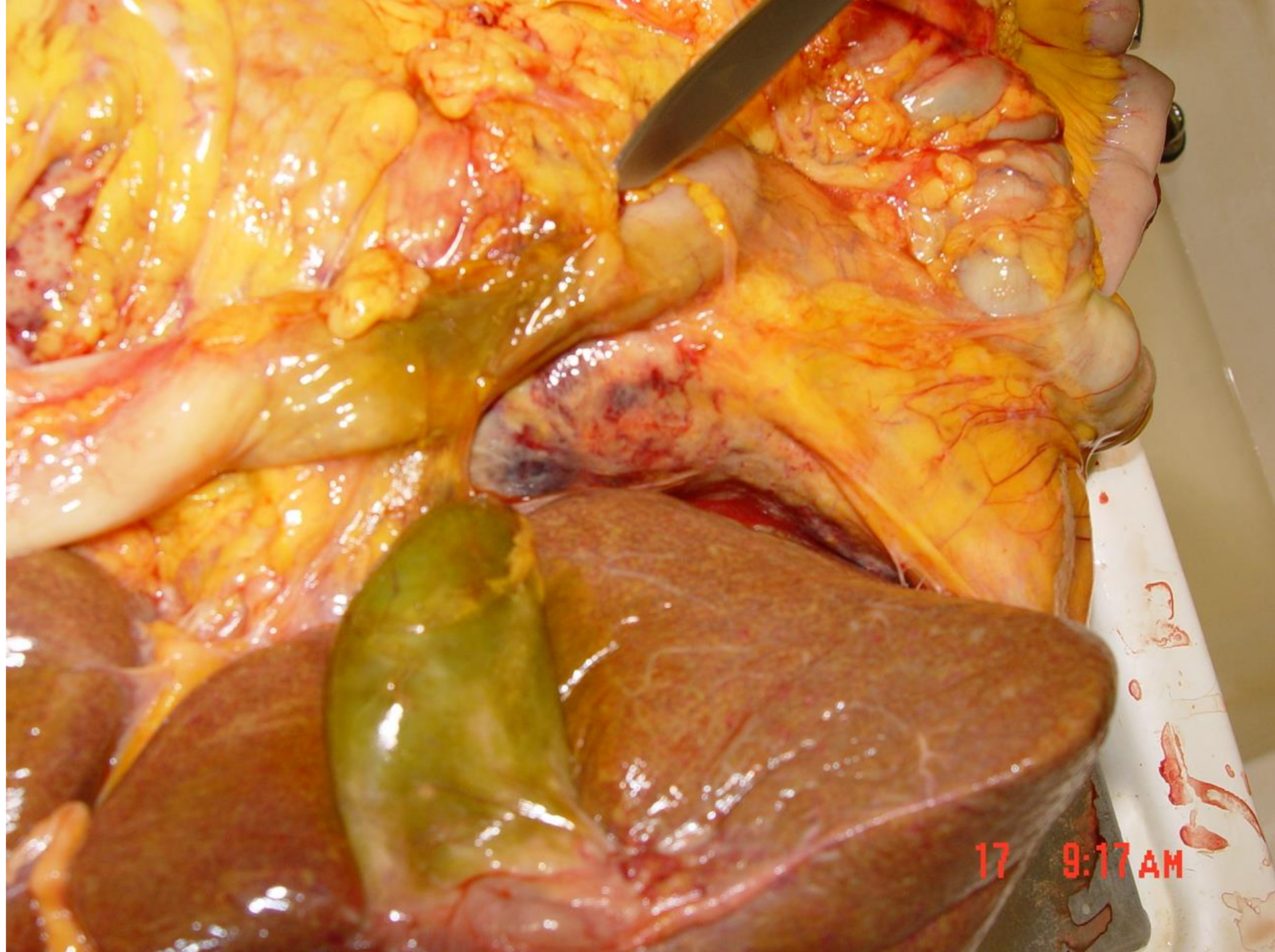




17 9:11 AM

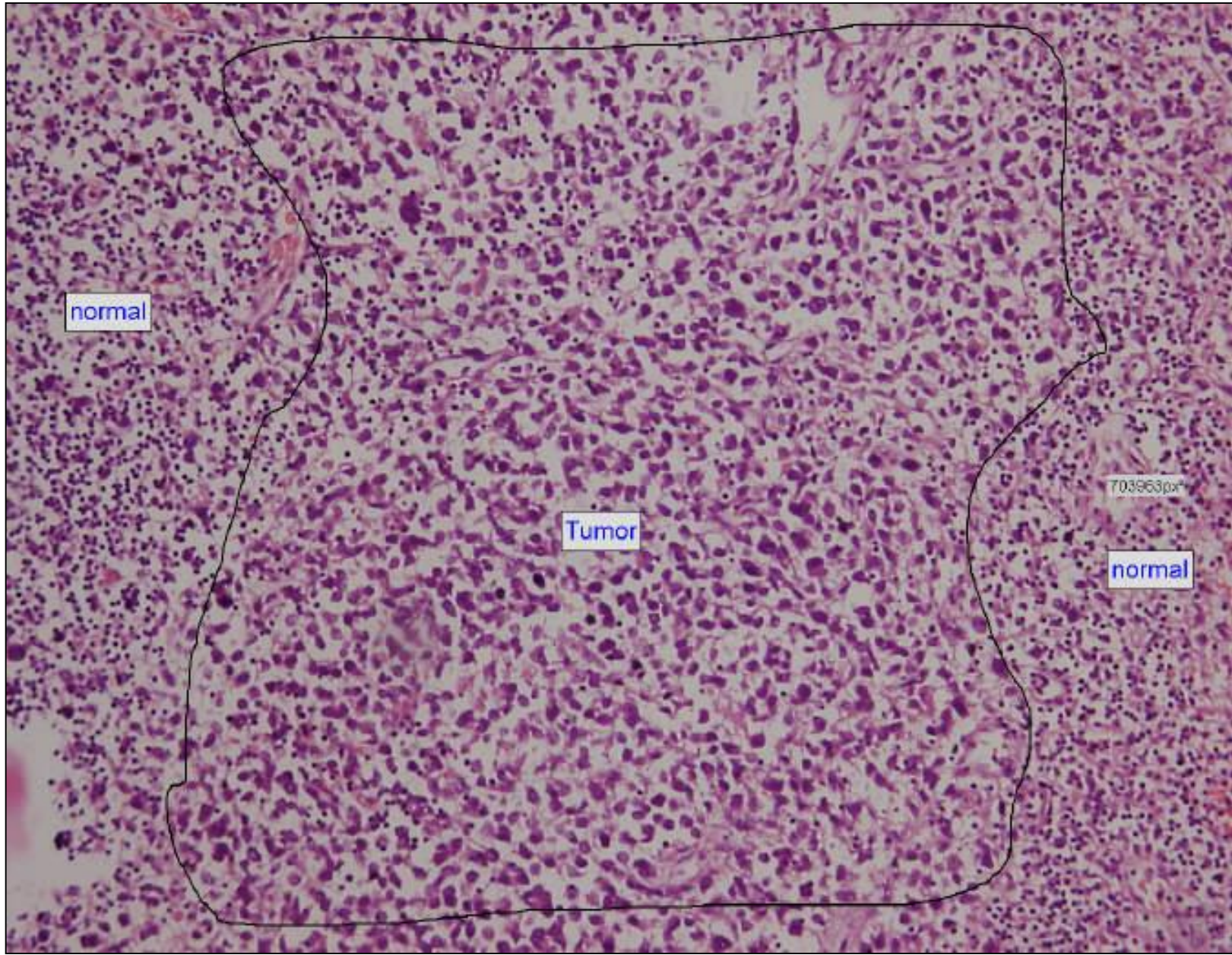


17 9:01 AM



17 9:17 AM





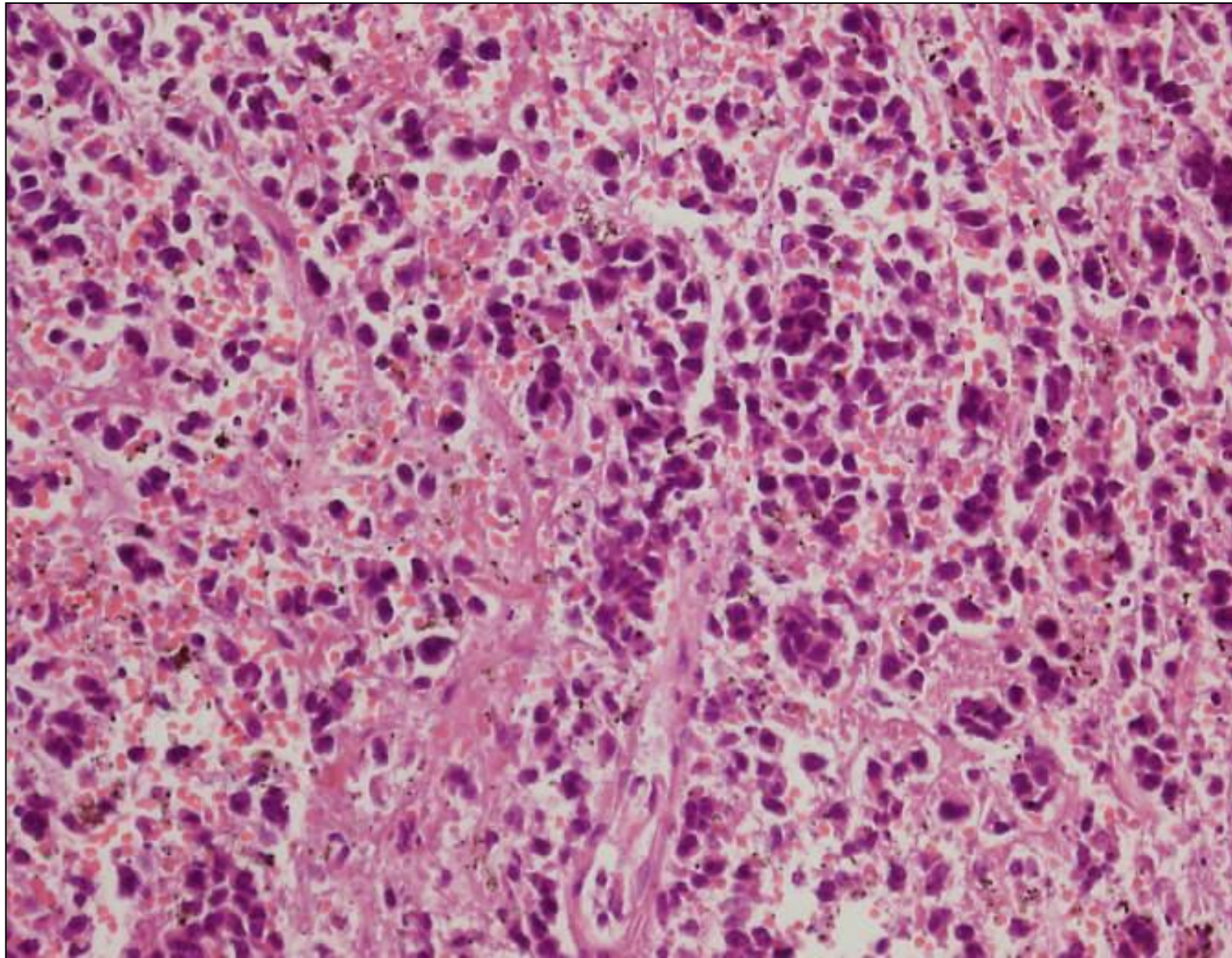
normal

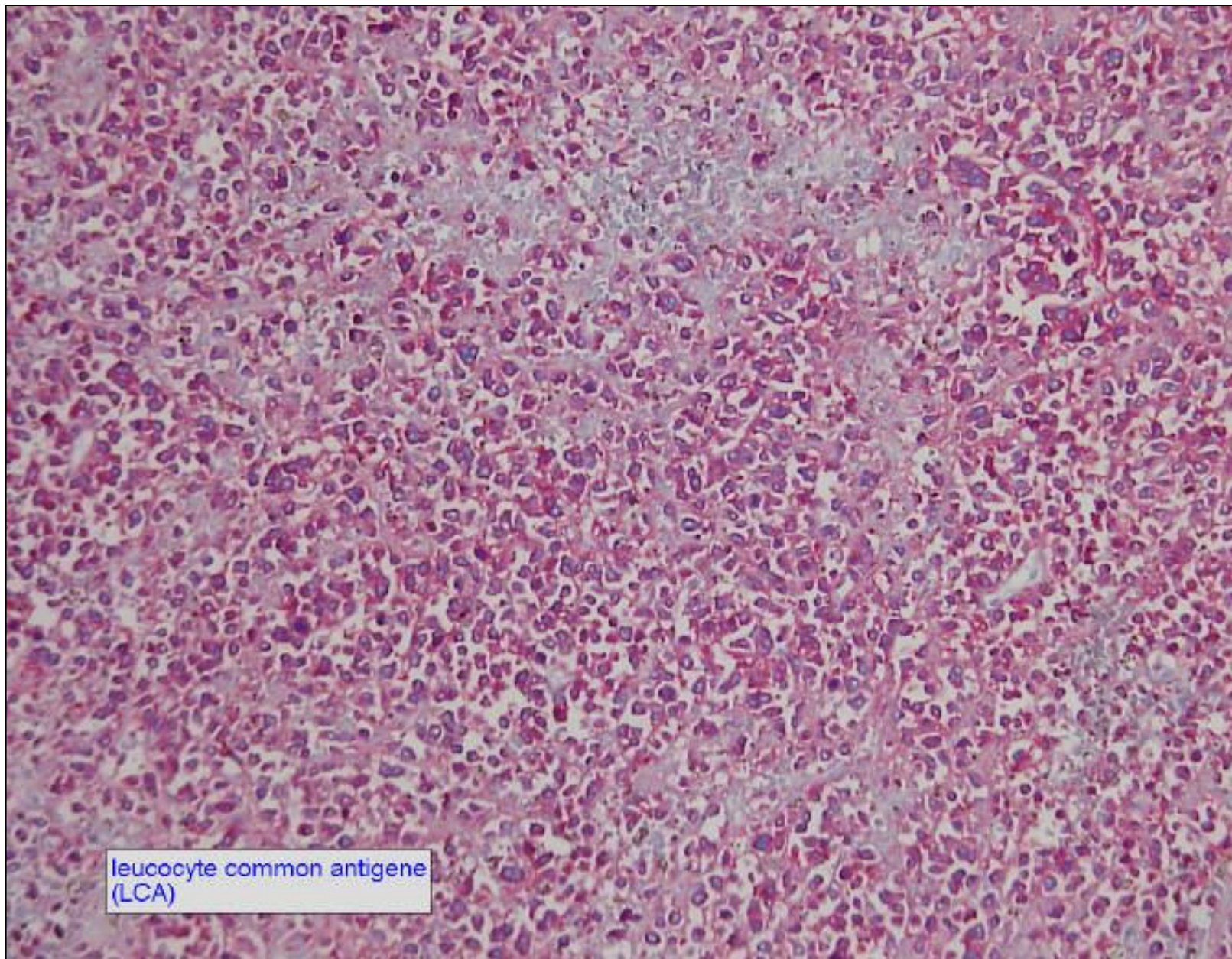
Tumor

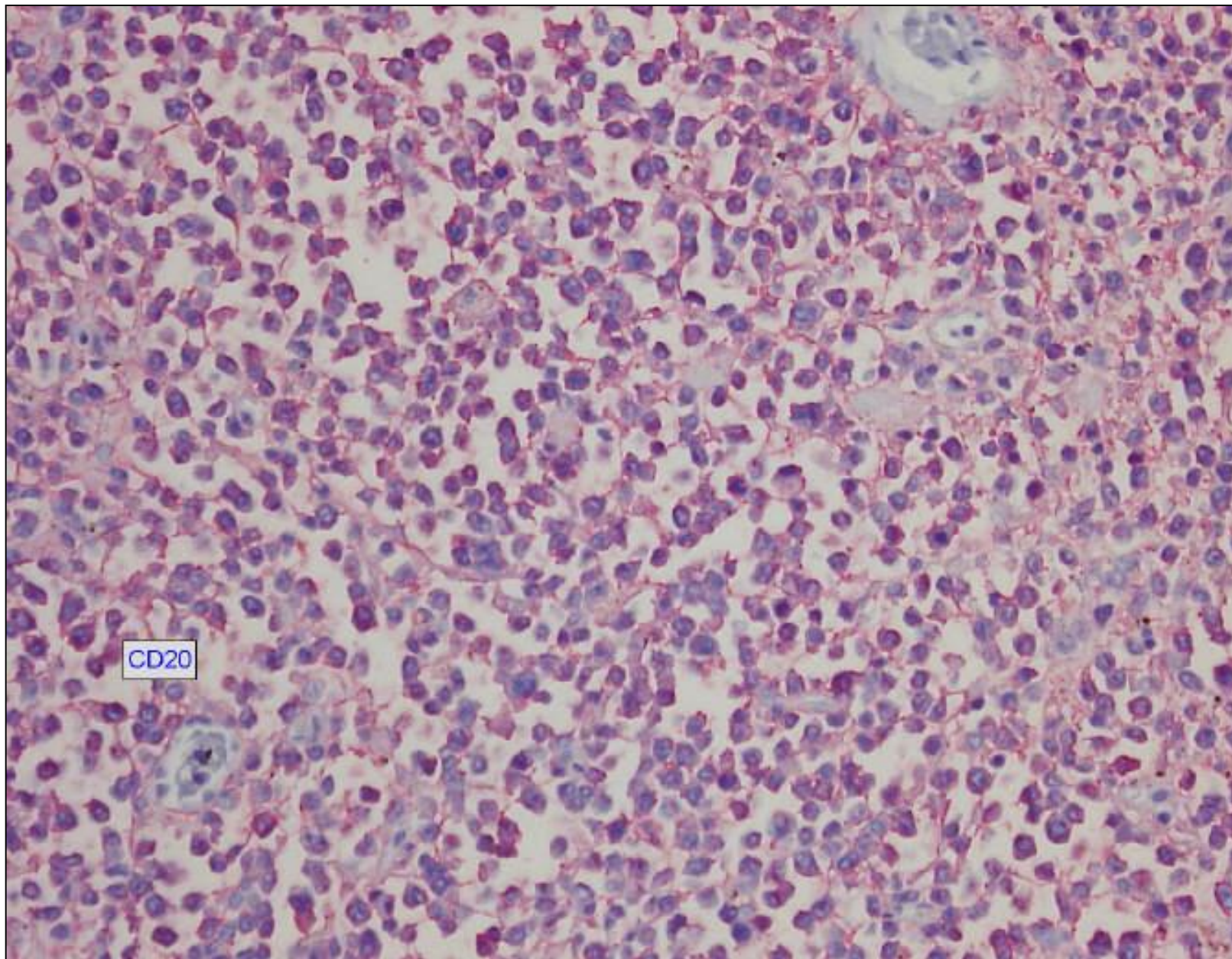
703963µm

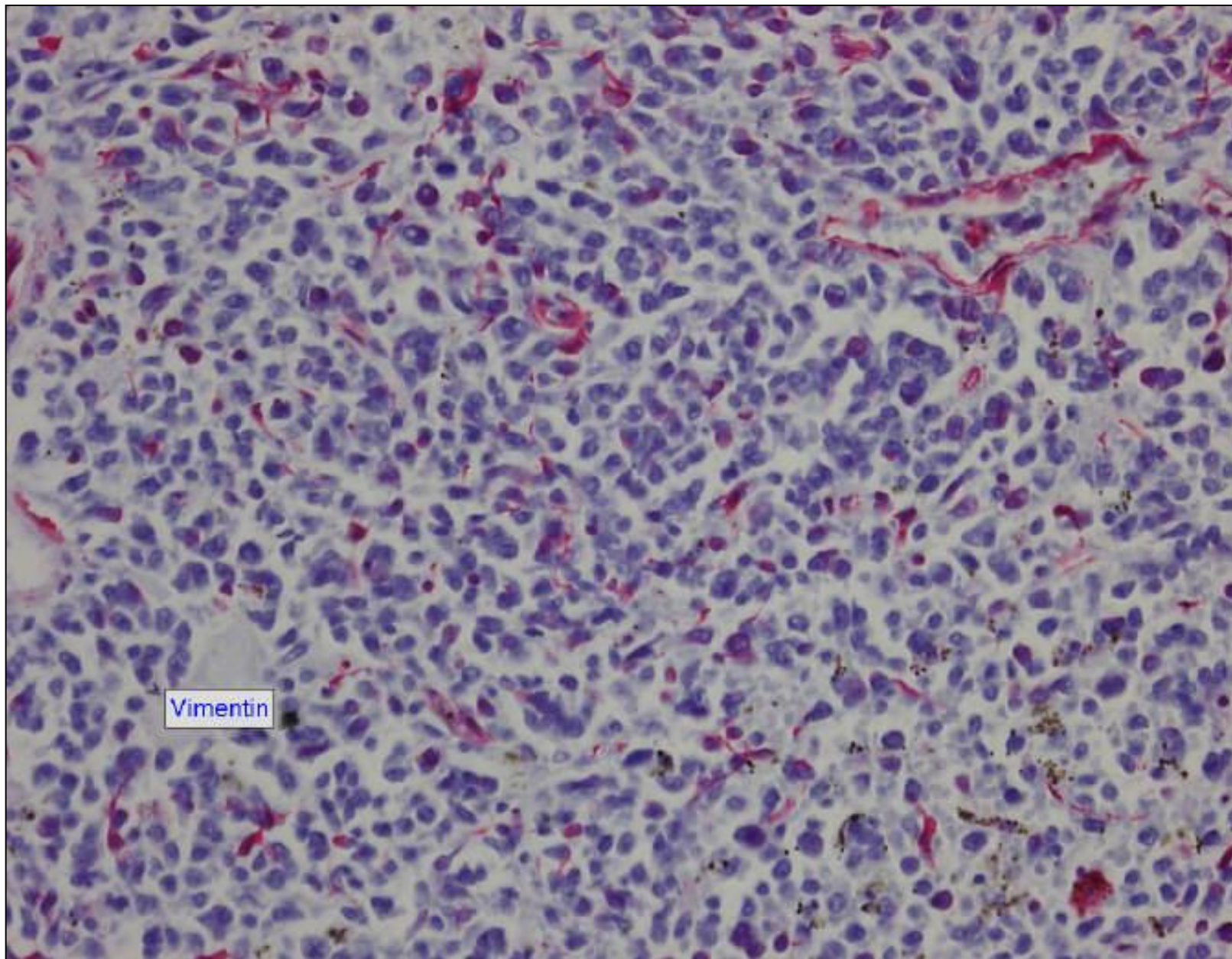
normal





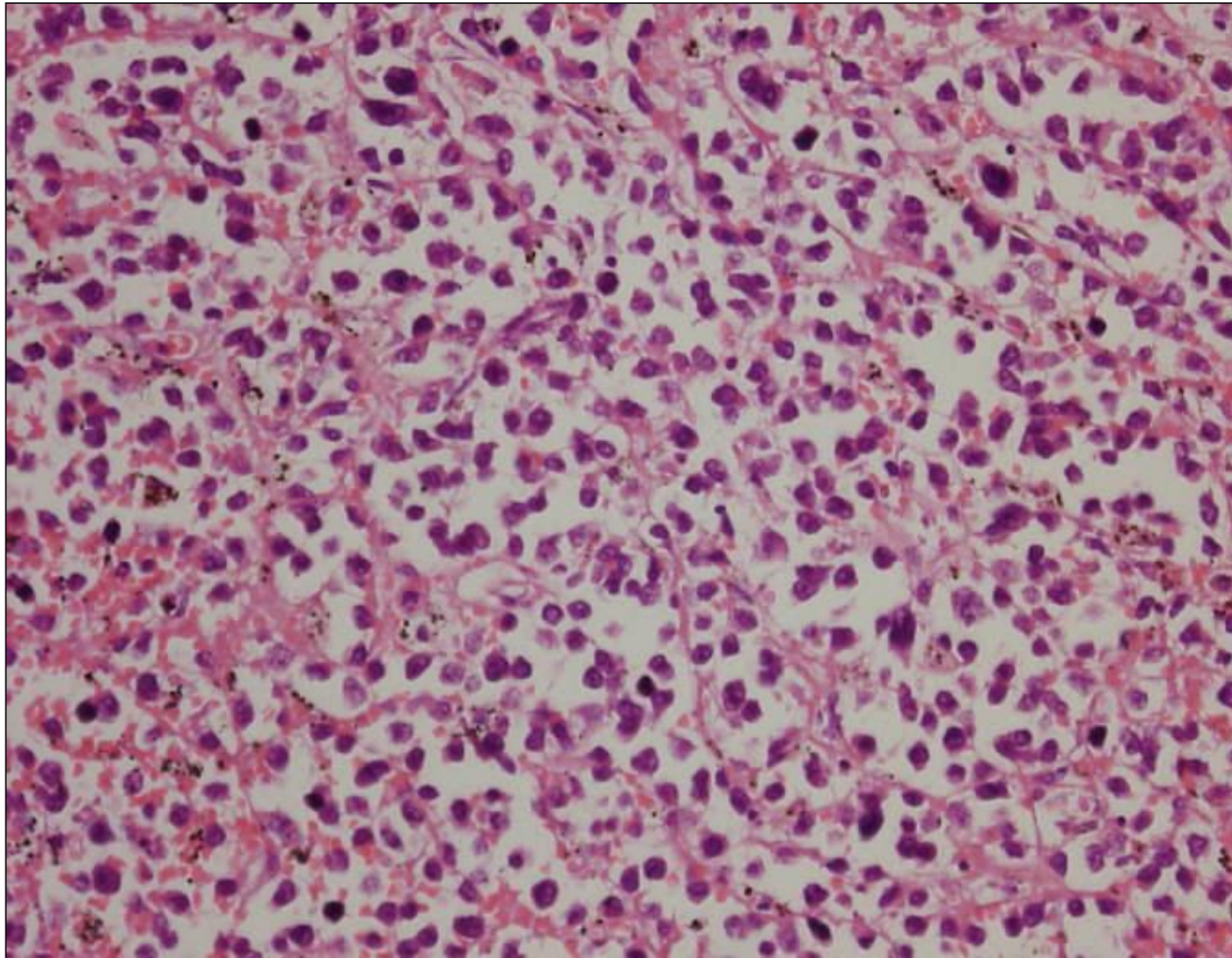


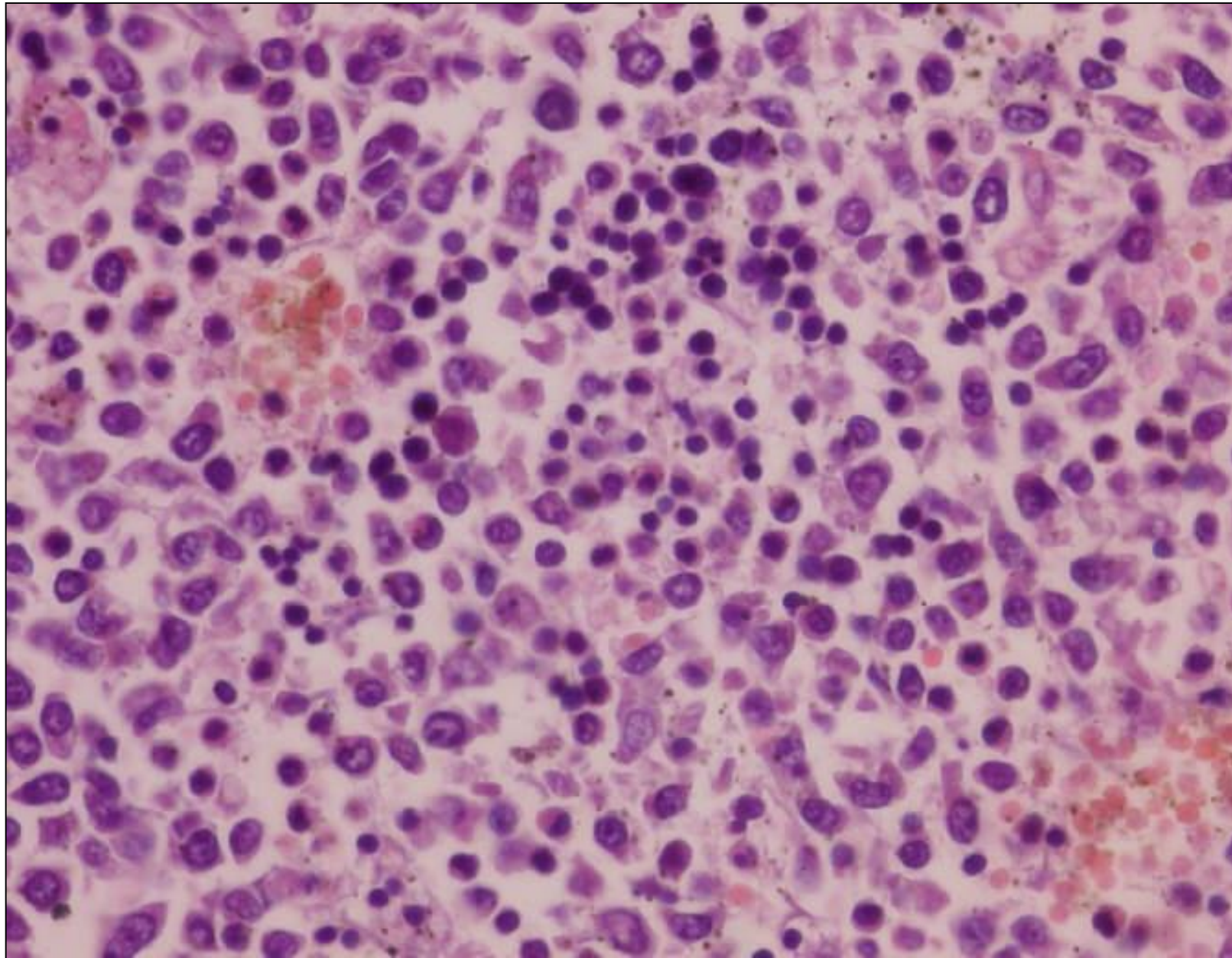


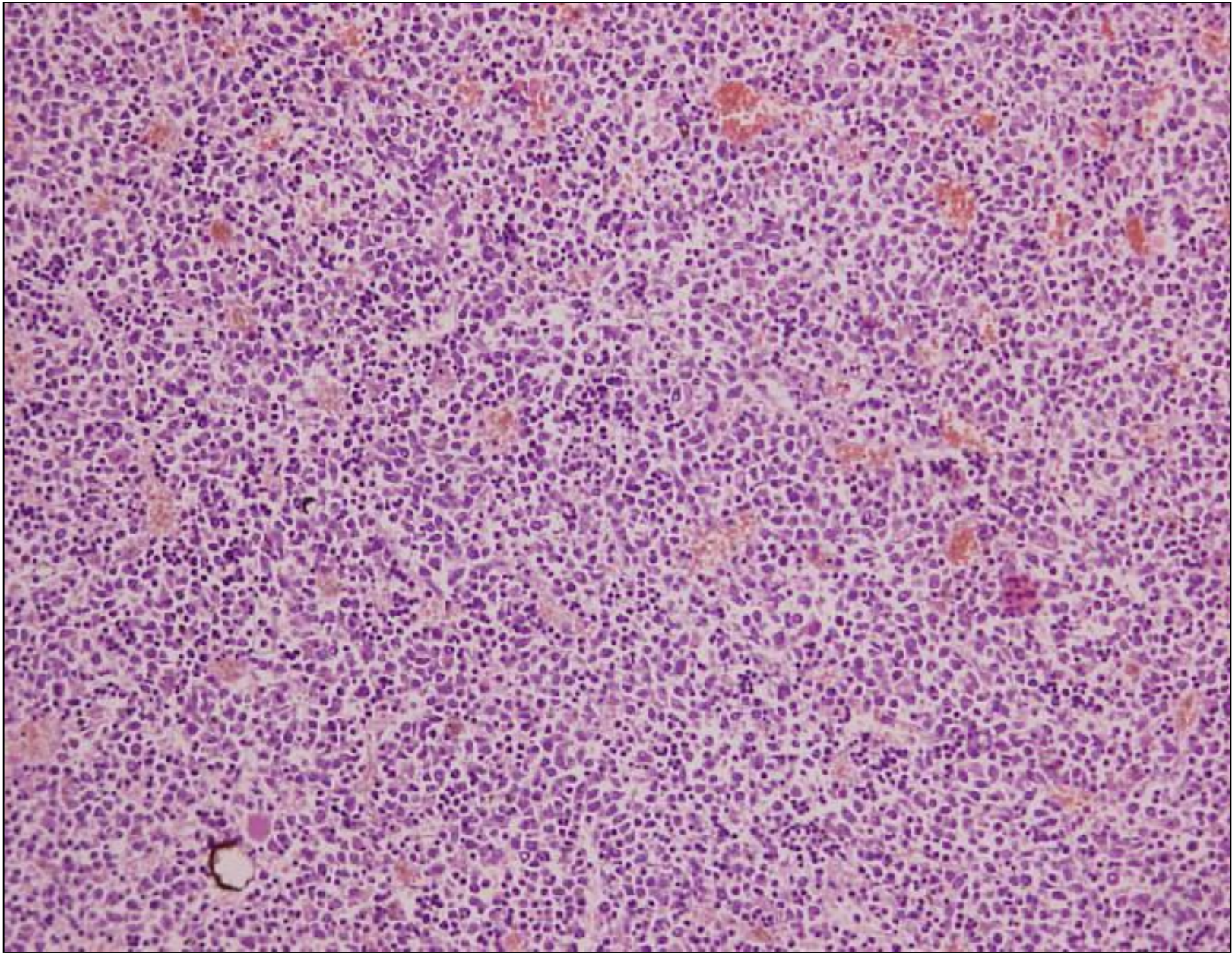


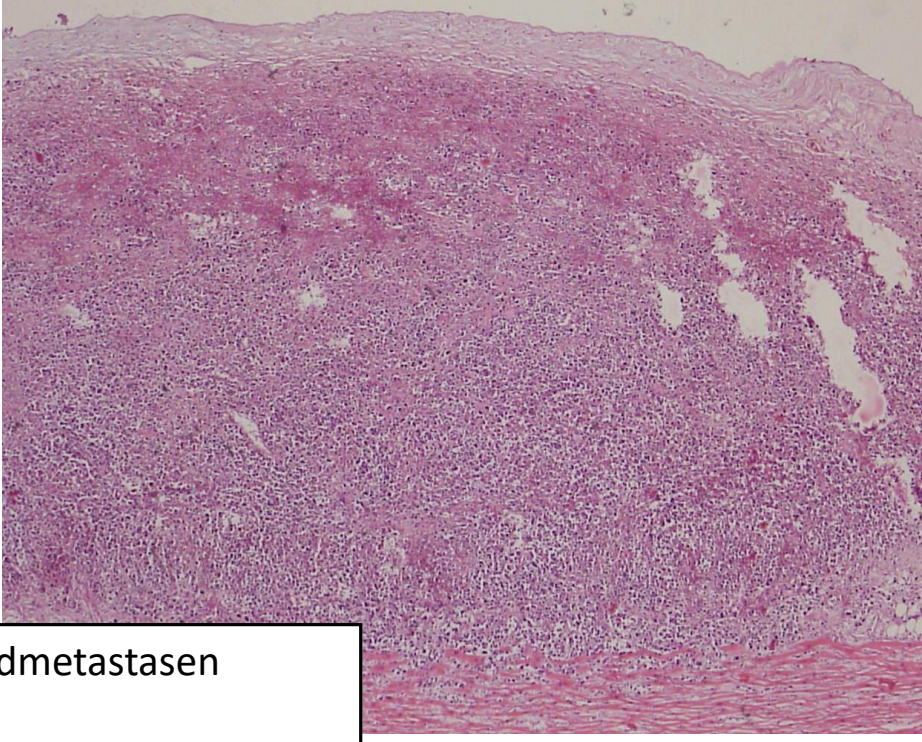
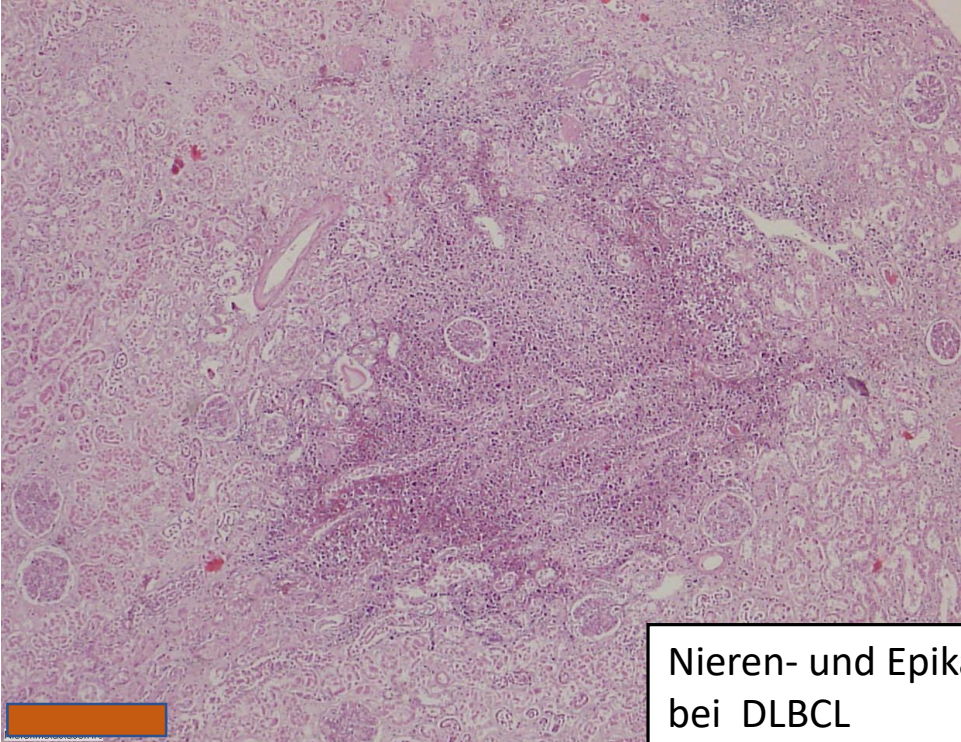
Vimentin



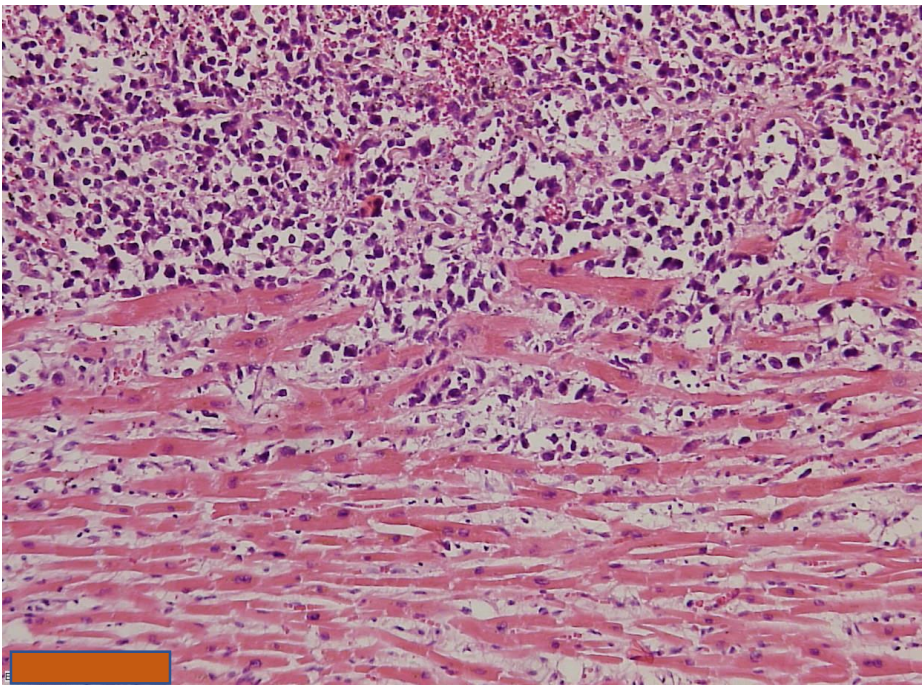
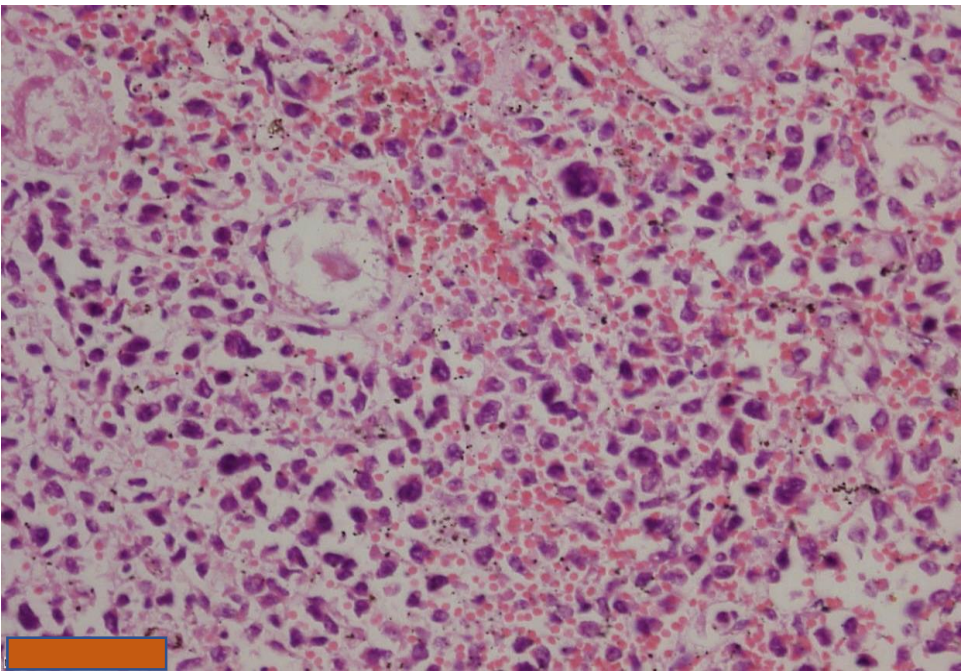






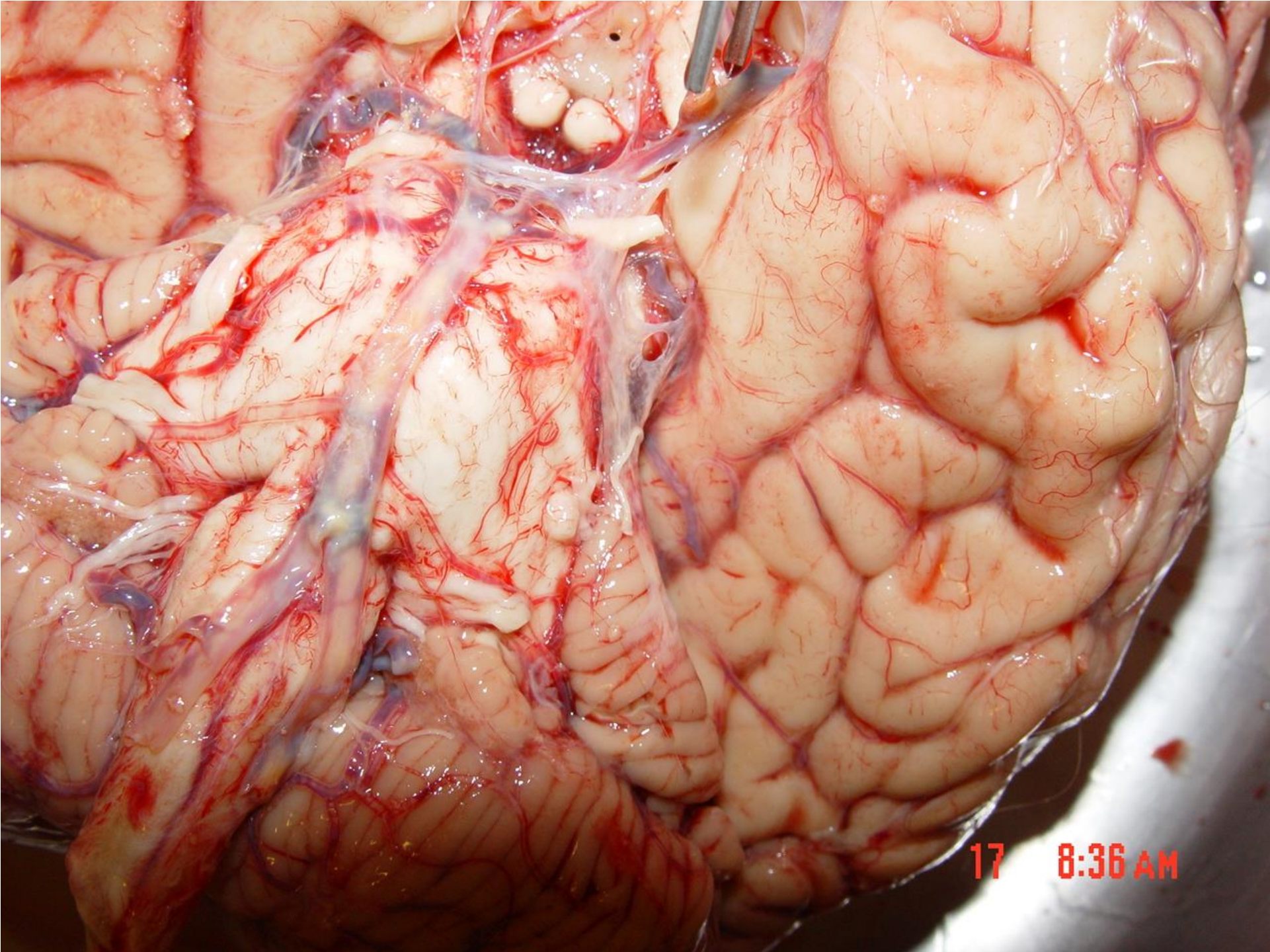


Nieren- und Epikardmetastasen bei DLBCL

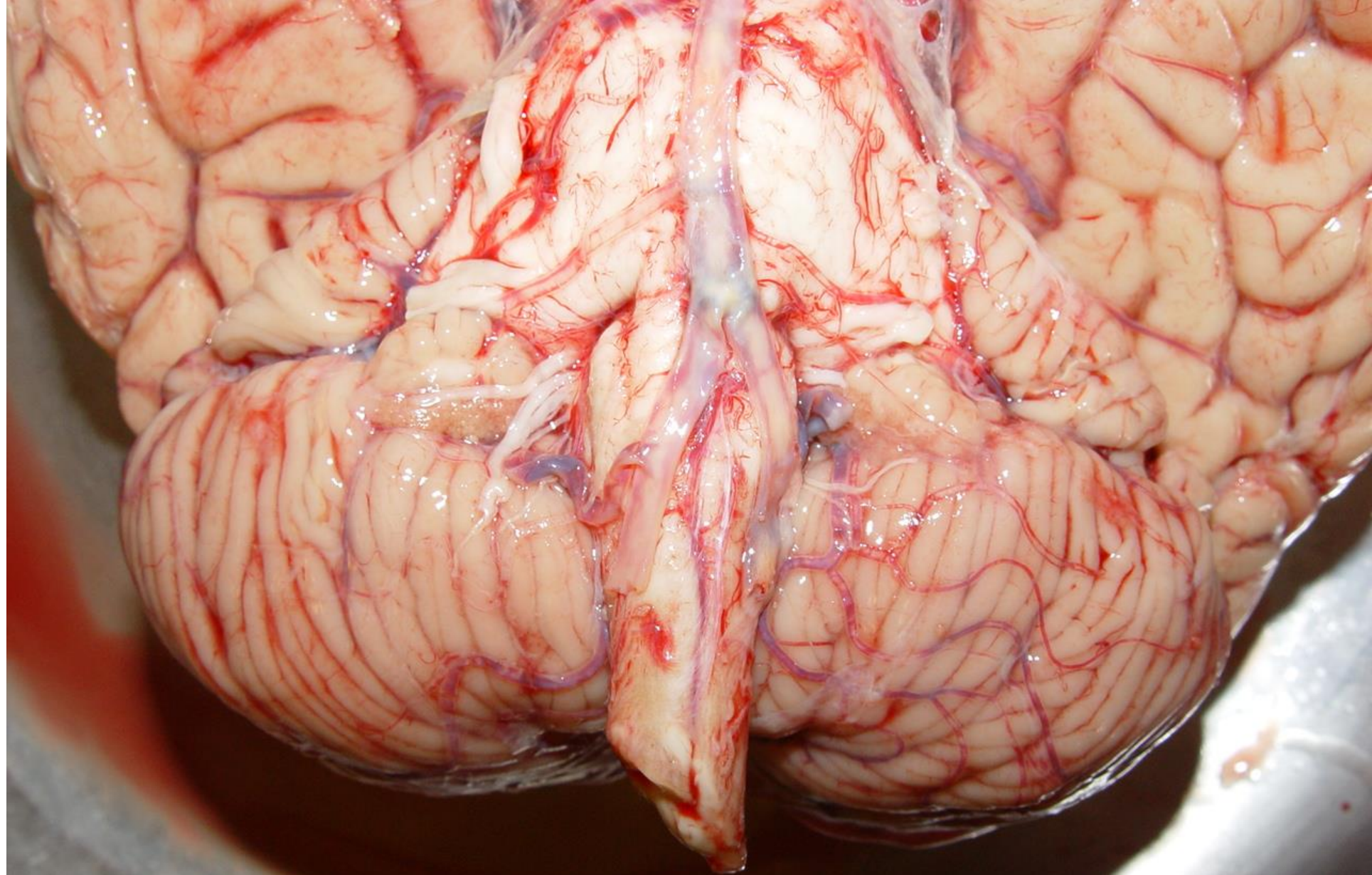




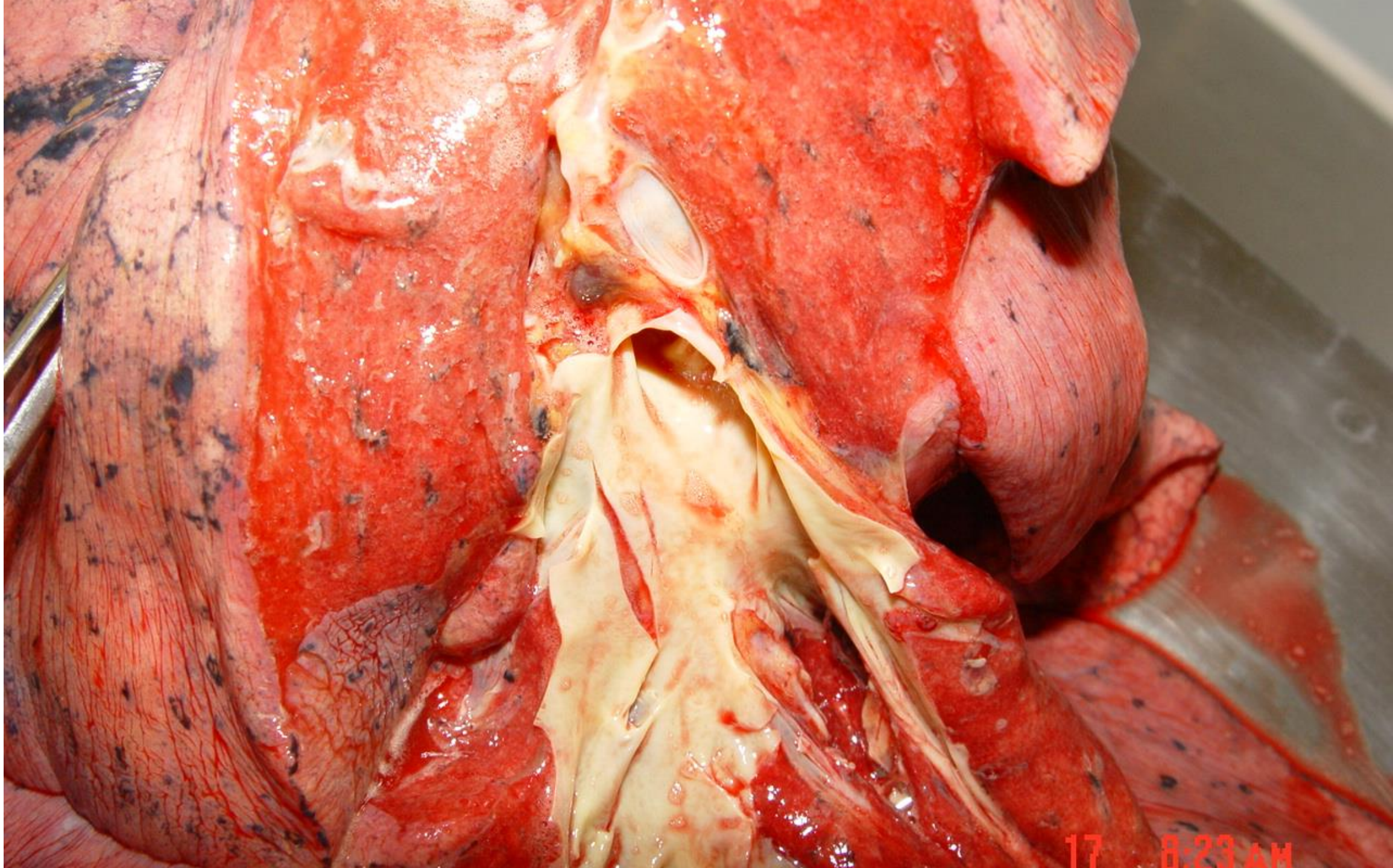
17 8:22 AM



17 8:36 AM



17 8:37 AM



17 8:23 AM

