

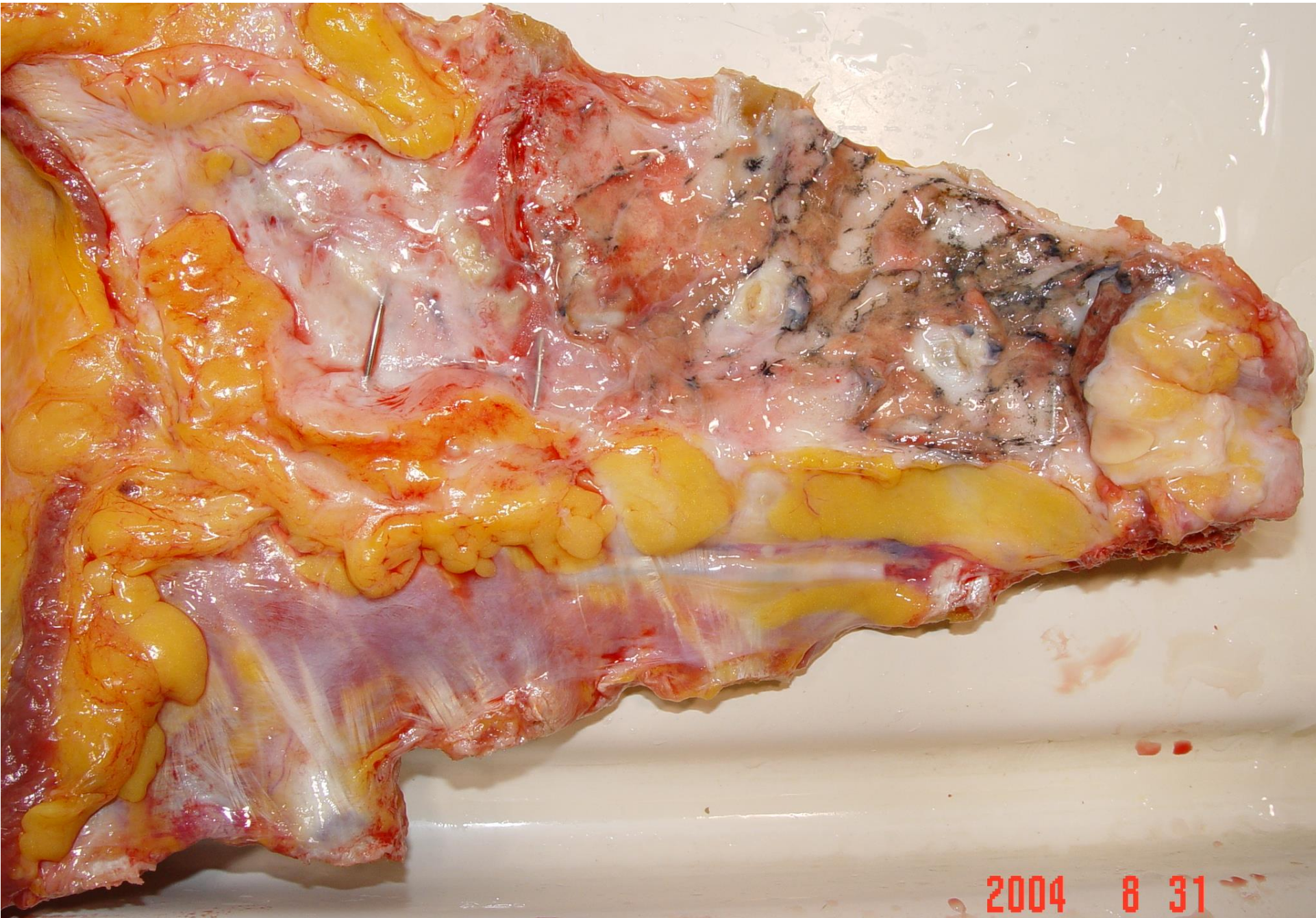
# Massive Aneurysmablutung der Aorta descendens

Falldemonstration weiblich 68 Jahre alt

1. Schwere allg. Atherosklerose. Zust.n.  
alloplastischem Ersatz der Aorta ascendes +  
Aortenklappe
2. Chronisch-obstruktive Lungenerkrankung
3. **Todesursache : irreversibler hämorrhagischer  
Schock bei massiver Aneurysmablutung**

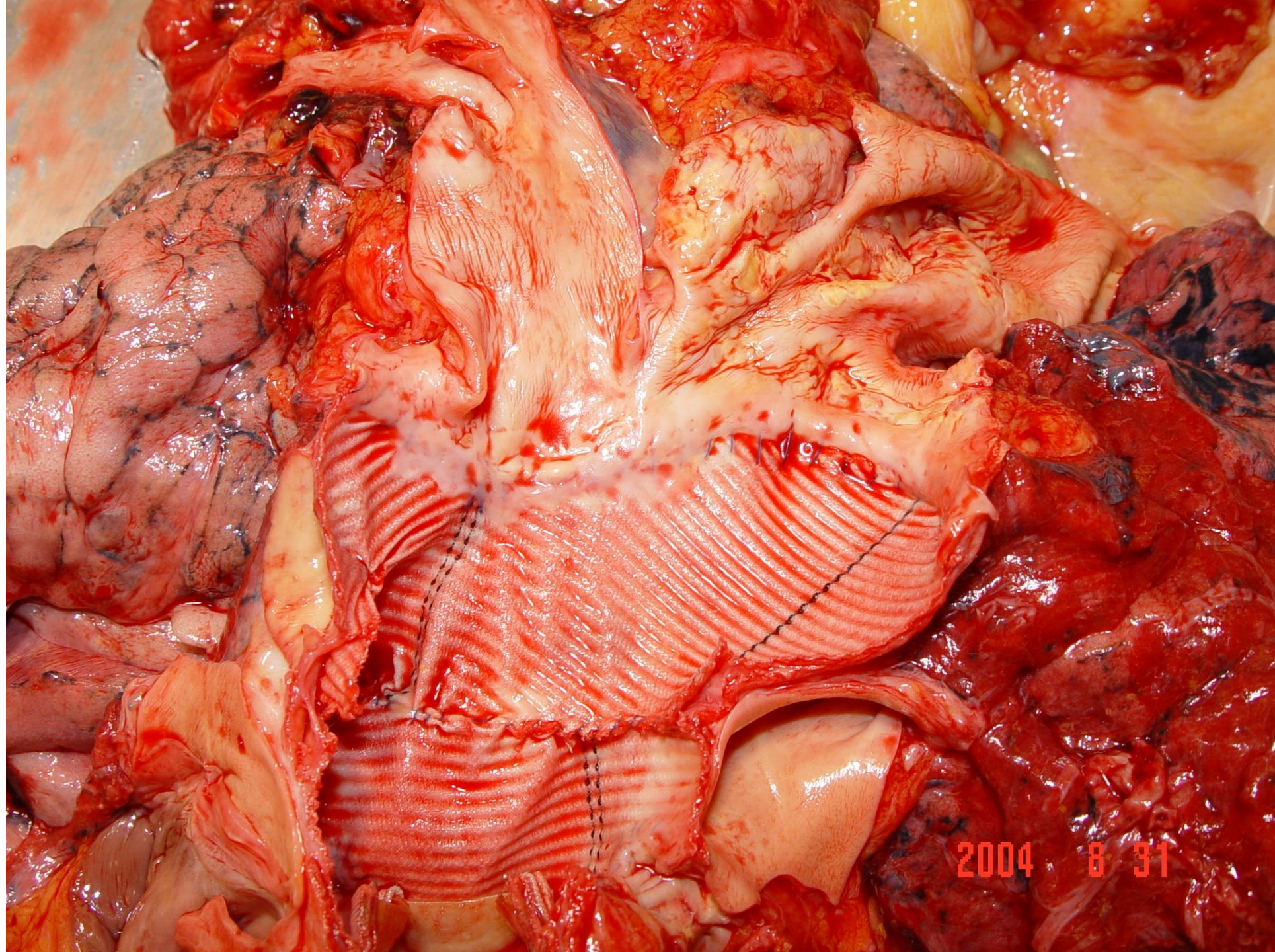


2004 8 31



2004 8 31

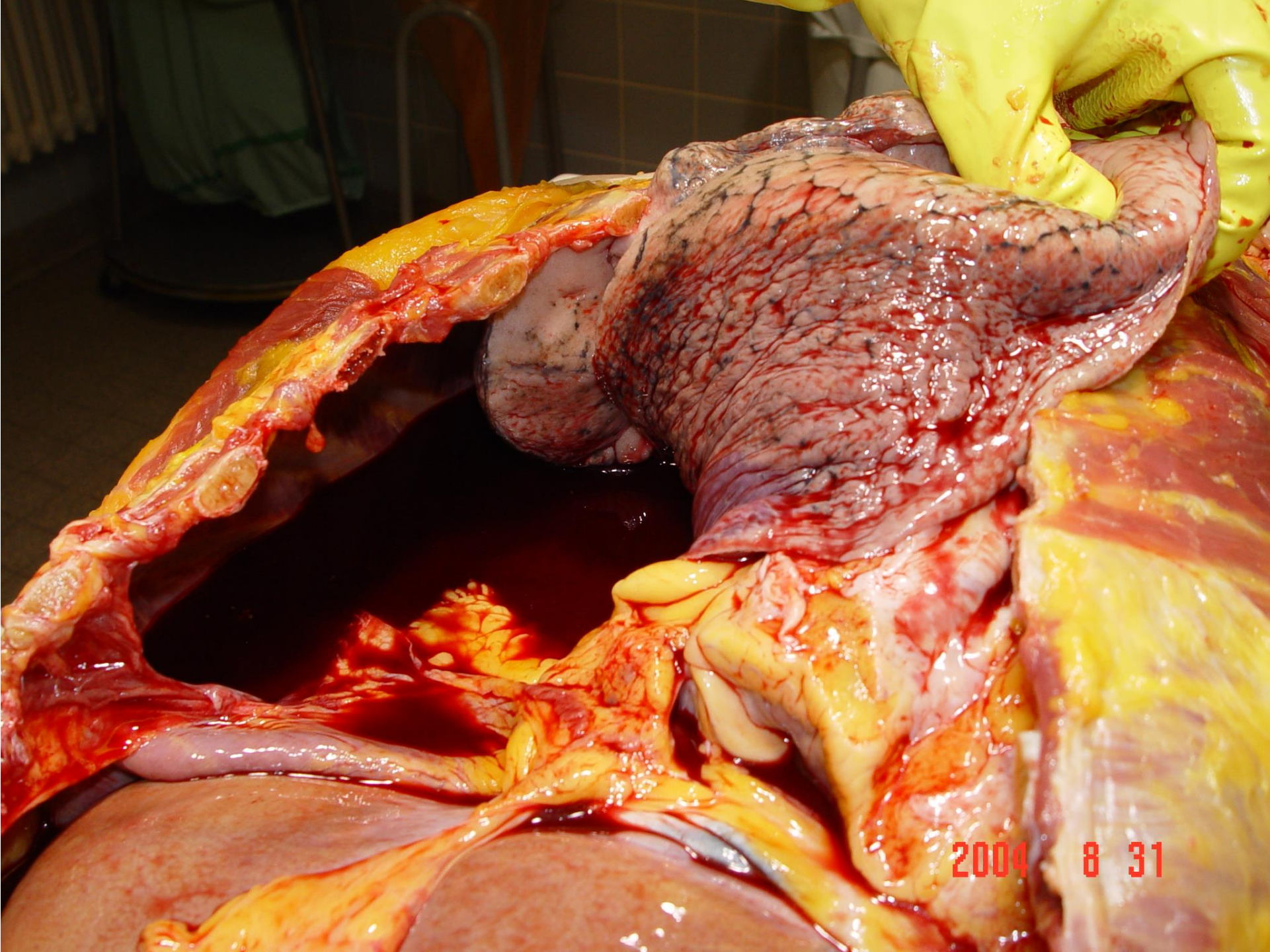




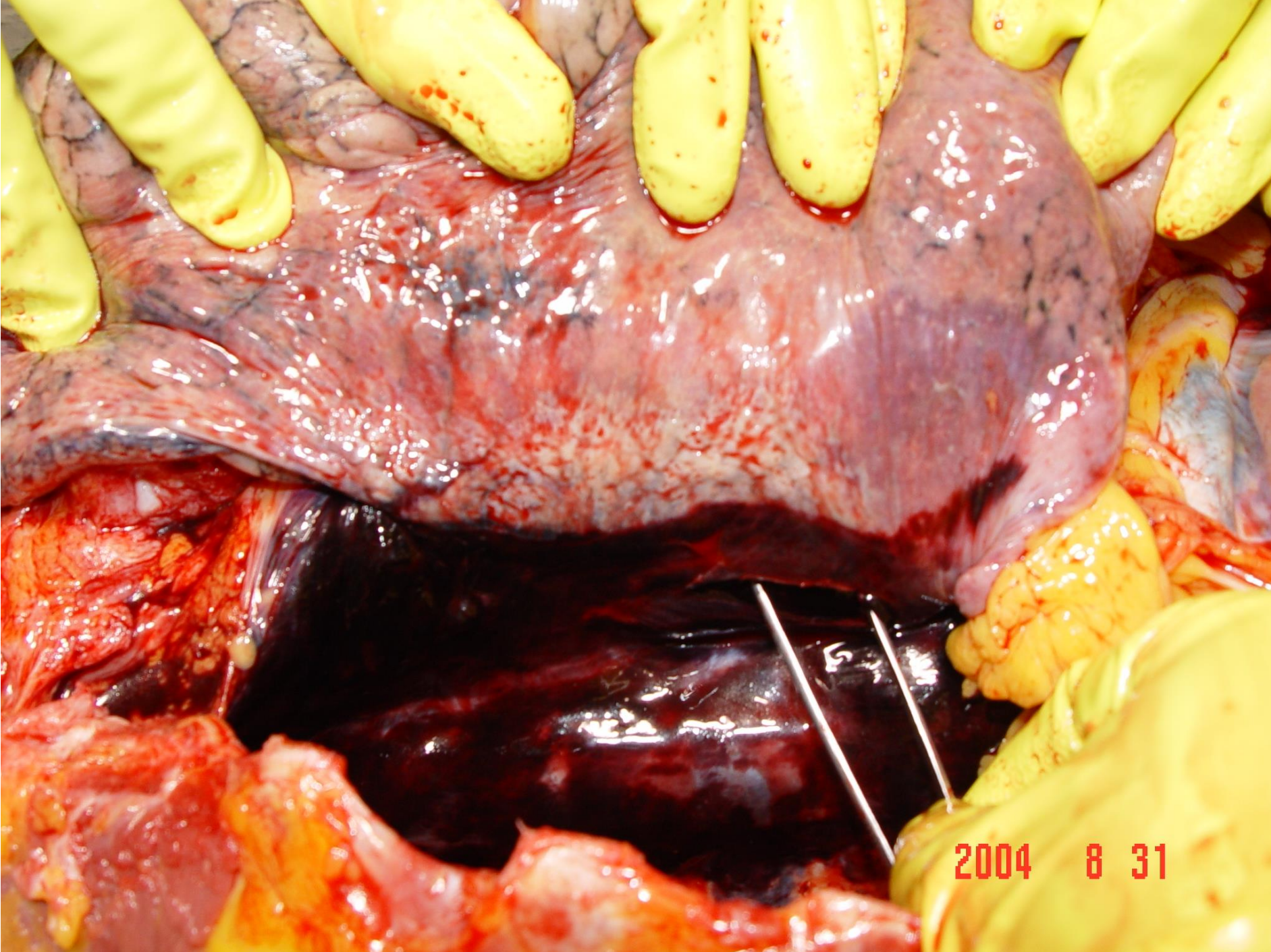
2004 8 31



2004 8 31

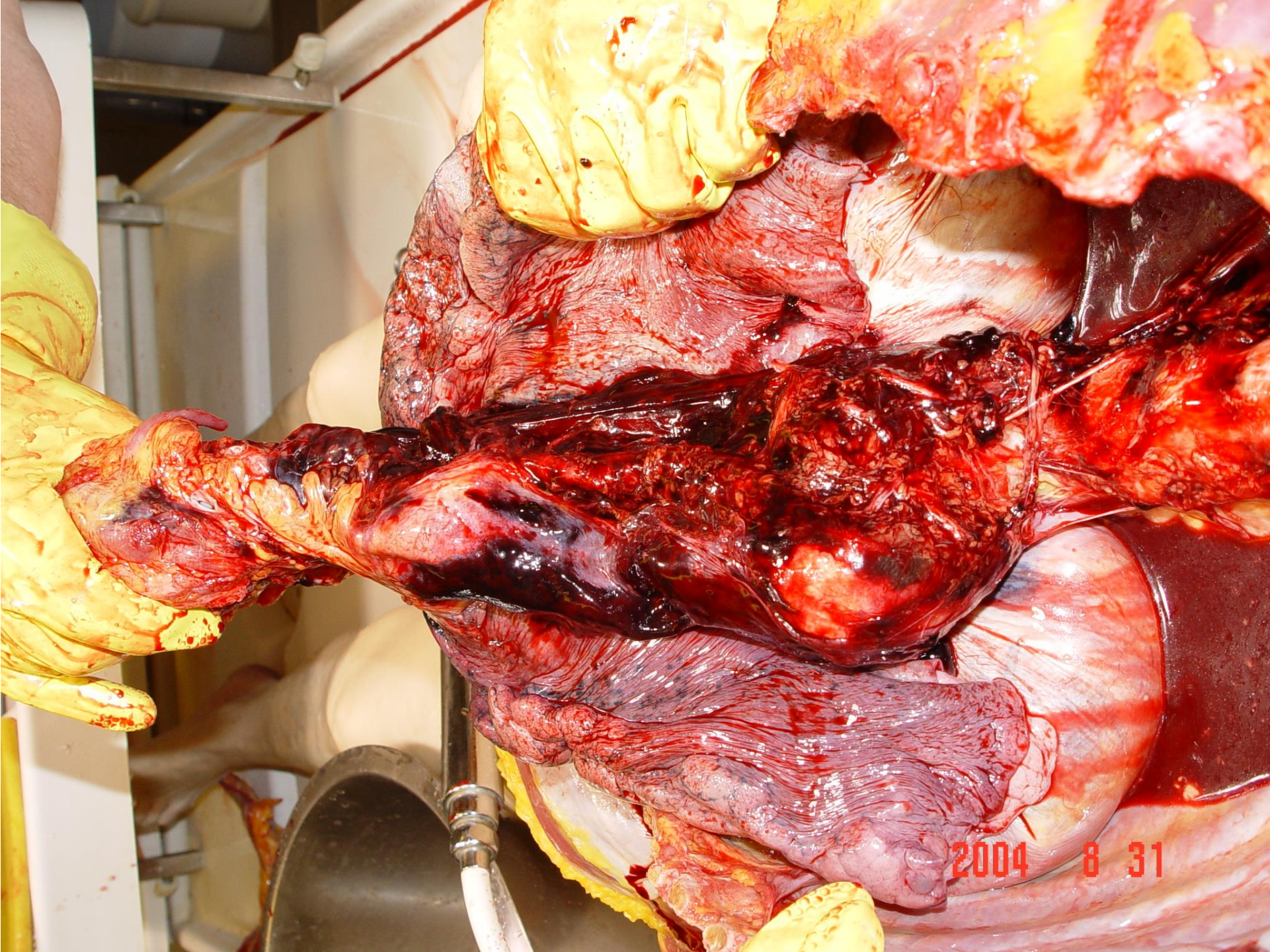


2004 8 31

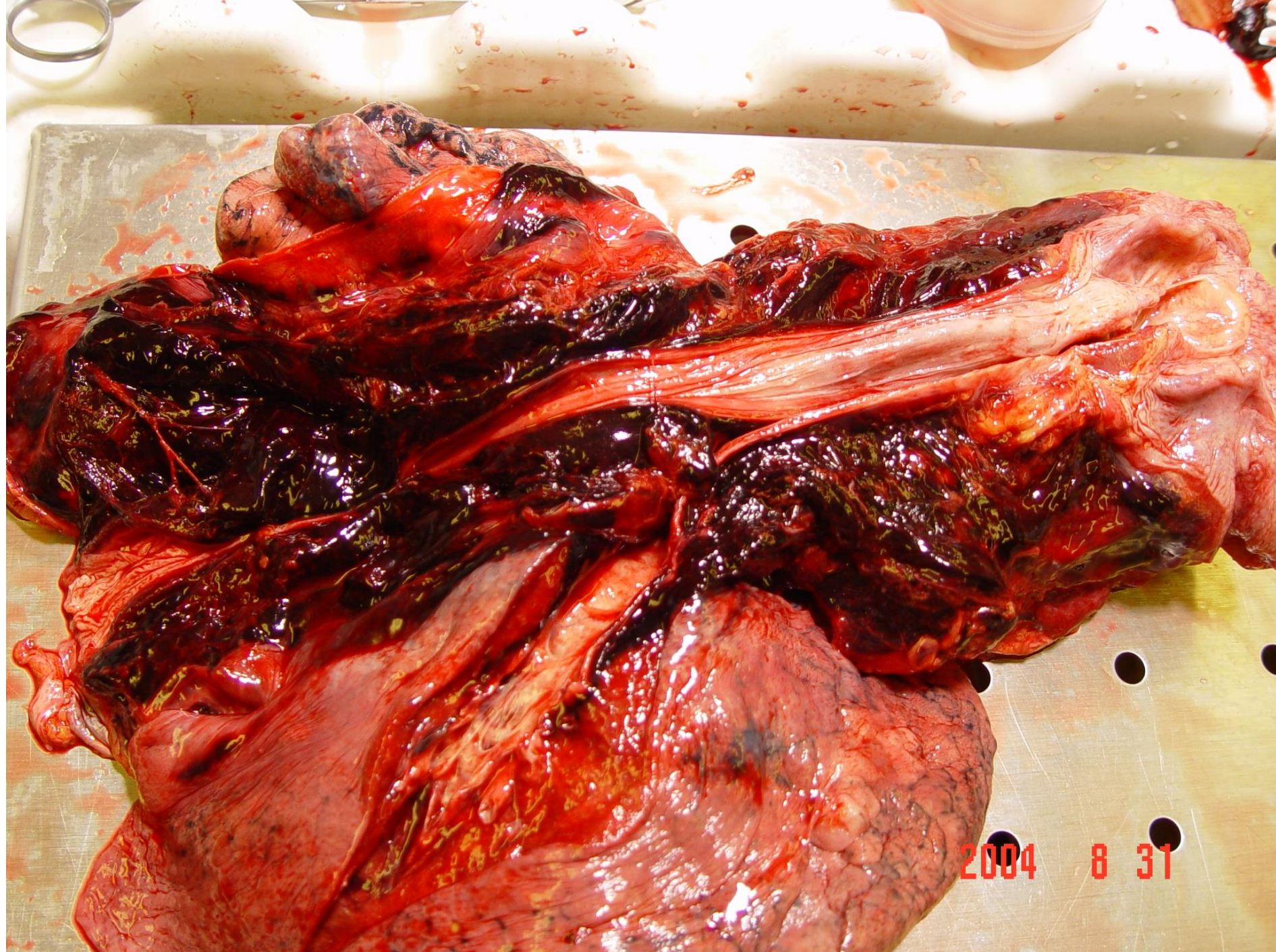


2004 8 31



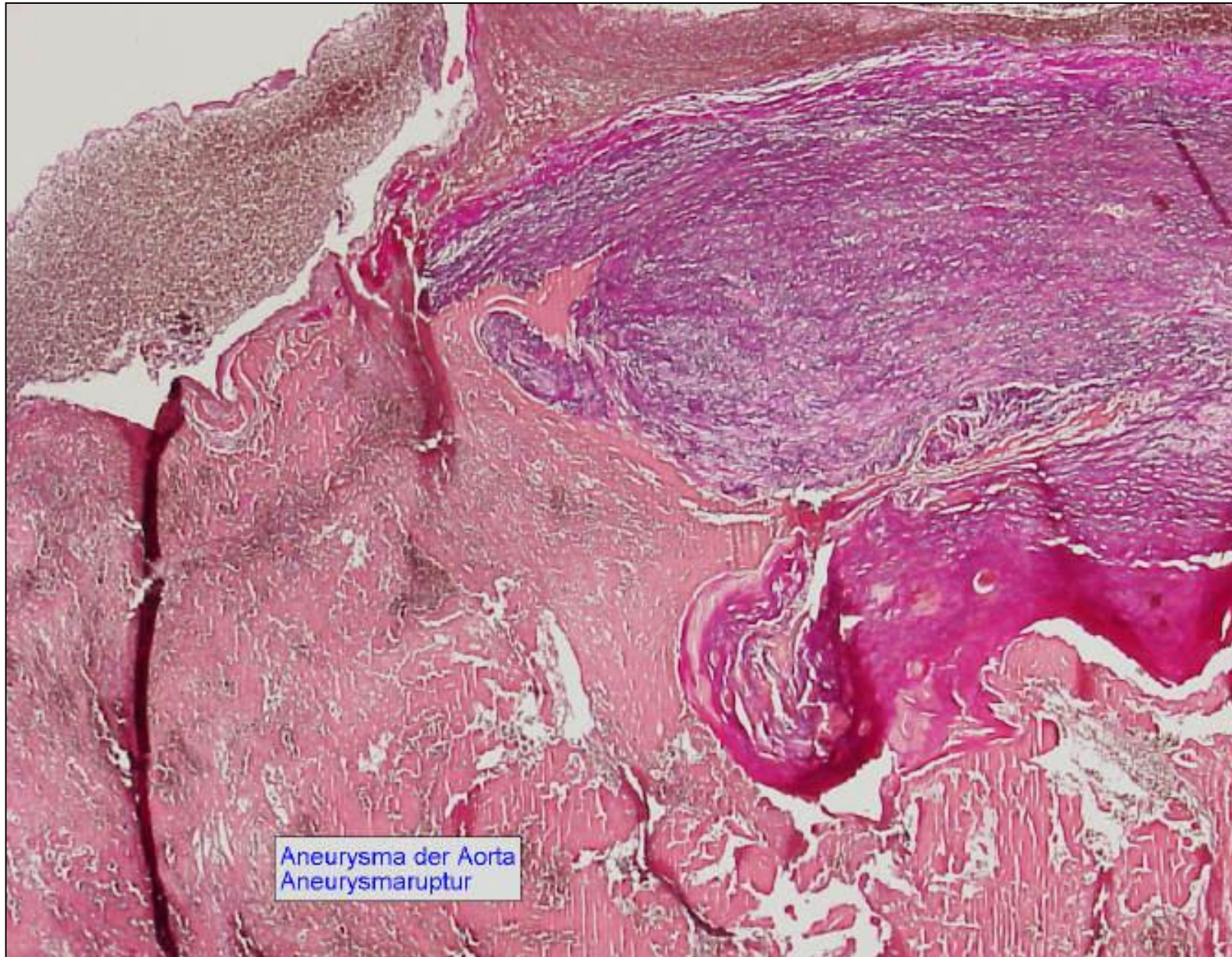


2004 8 31



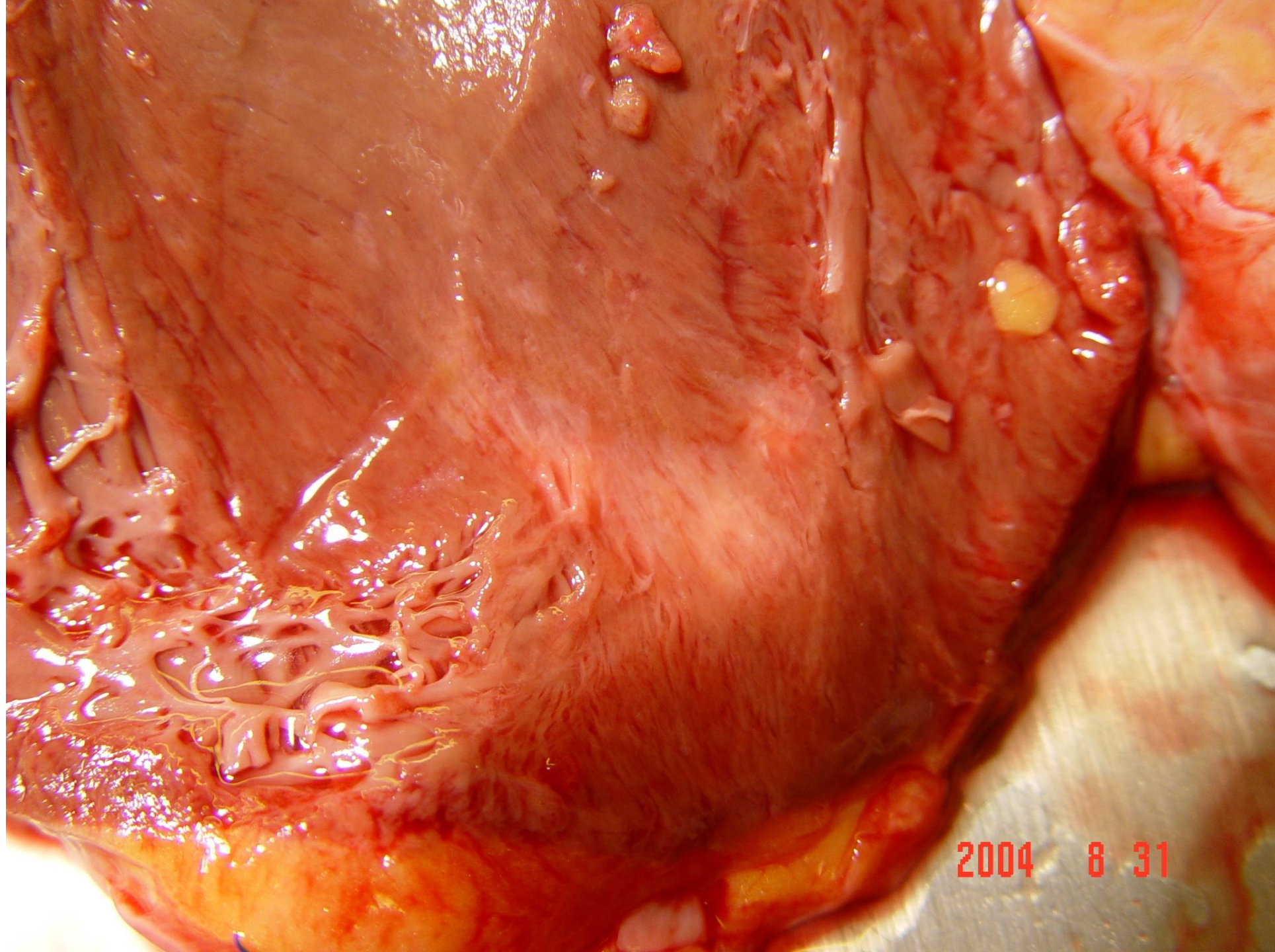


2004 8 31

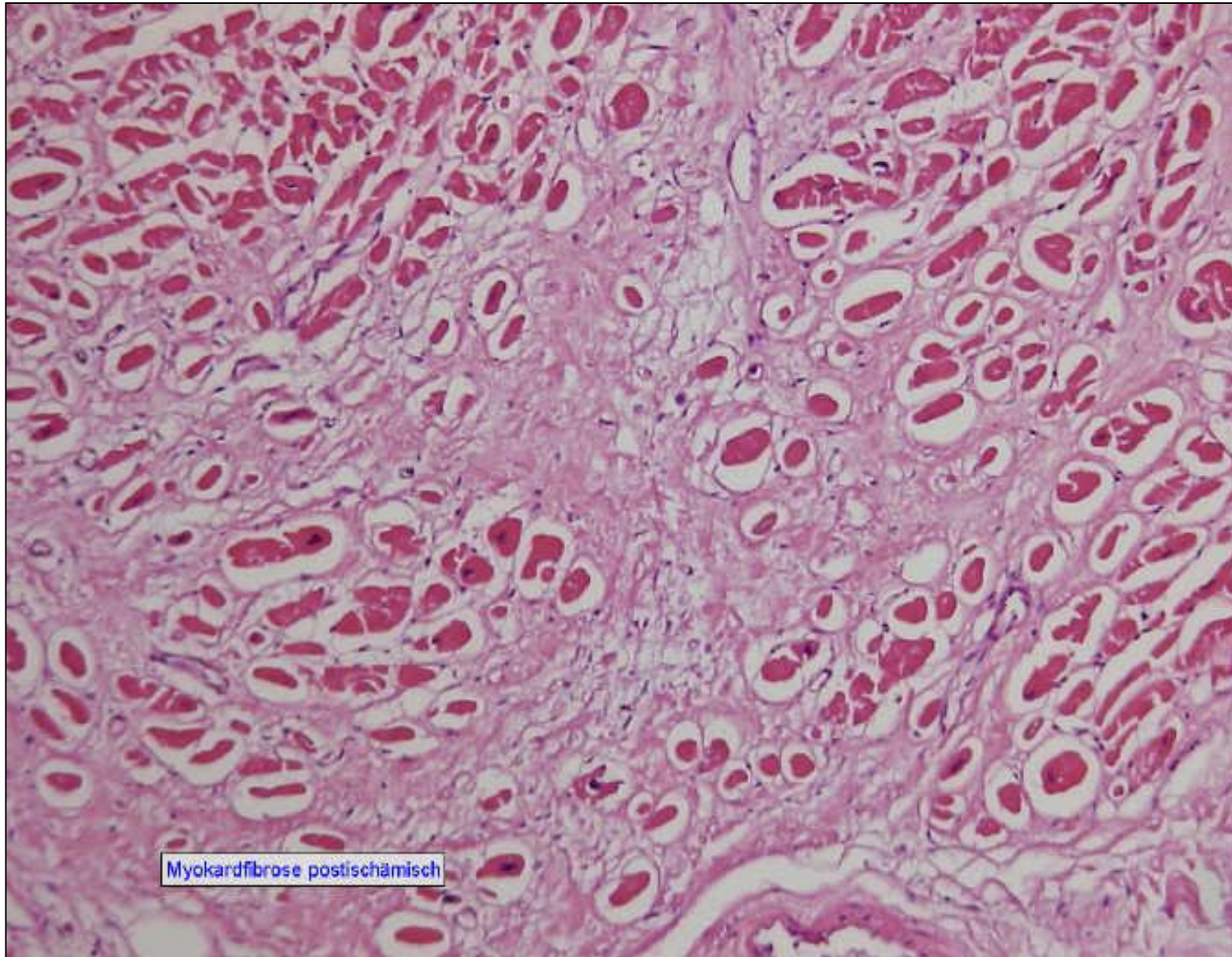


Aneurysma der Aorta  
Aneurysmaruptur





2004 8 31



Myokardfibrose postischämisch



