

Sog. Amyloid-Tumor Falldemonstration

weiblich 82 Jahre alt

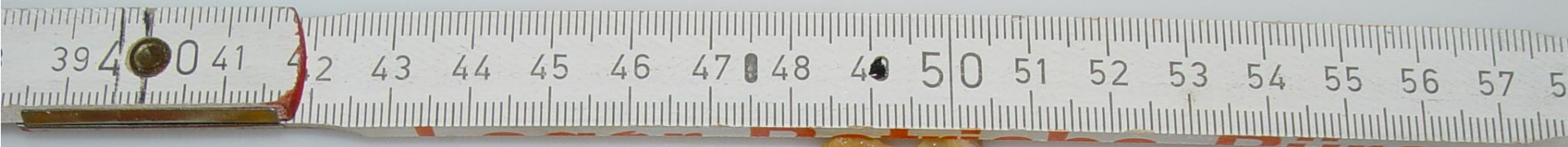
Unterarm rechts
und
Rücken



2004 7 3



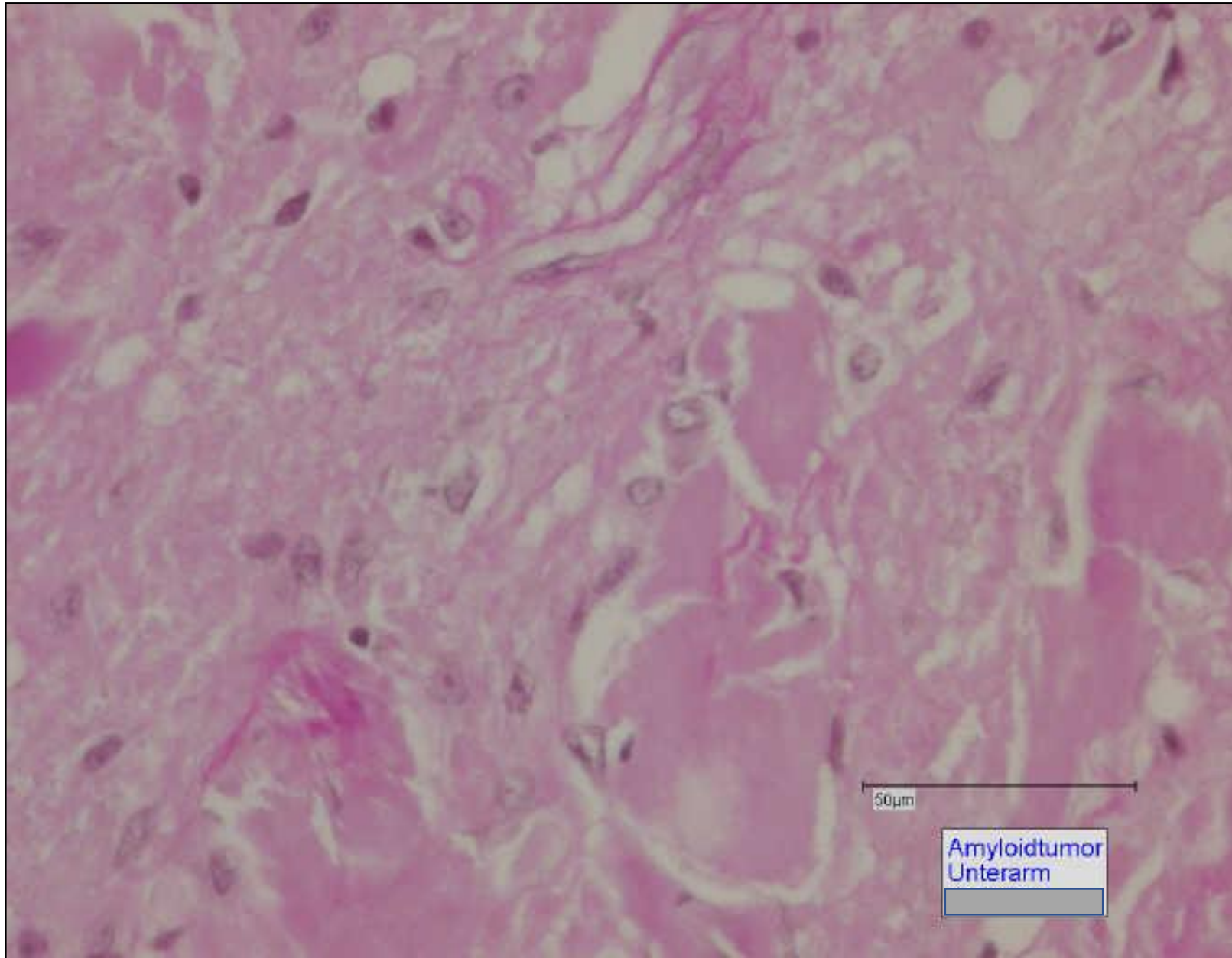
2004 7 3



2004 7 3



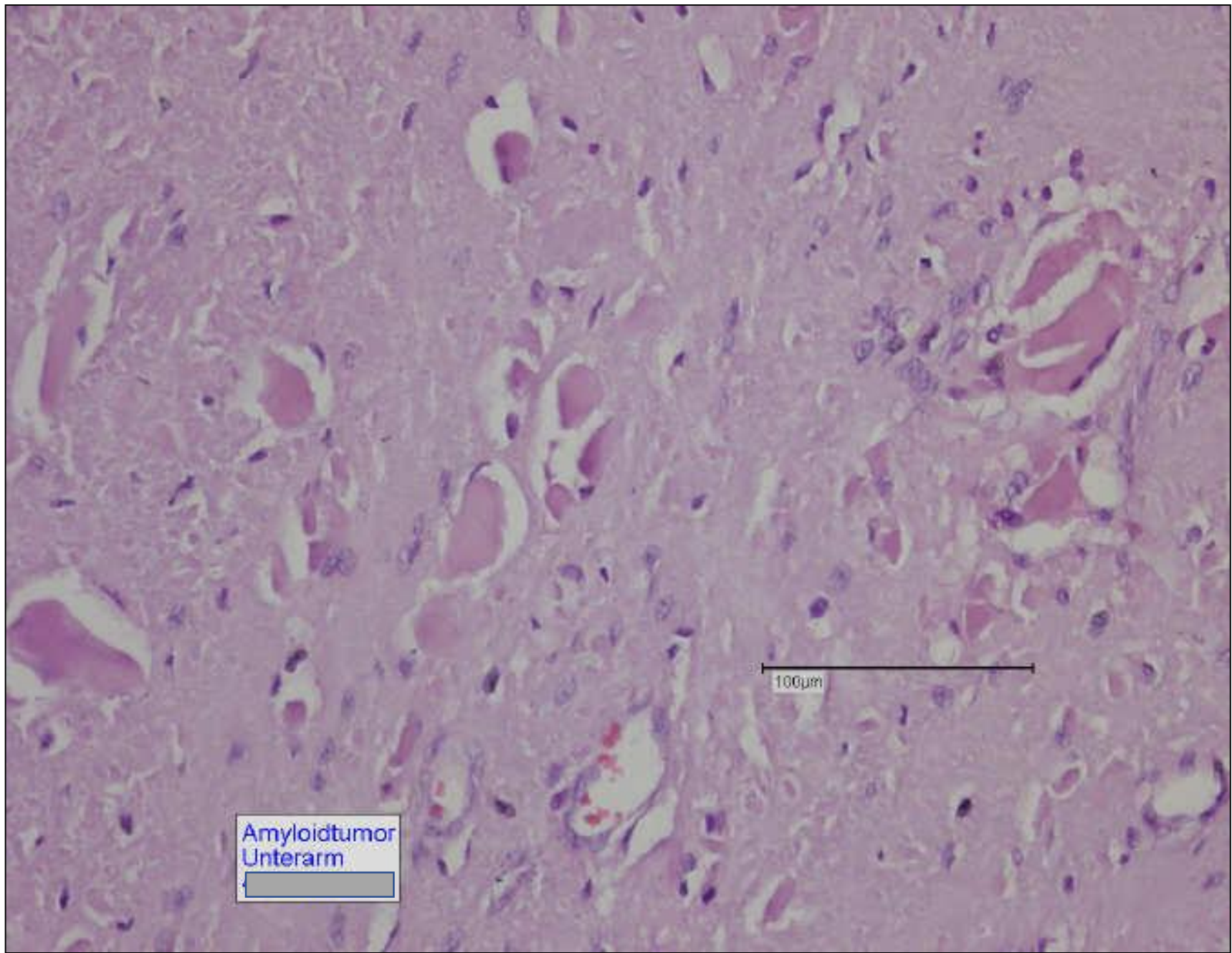
2004 7 3



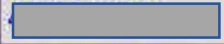
50µm

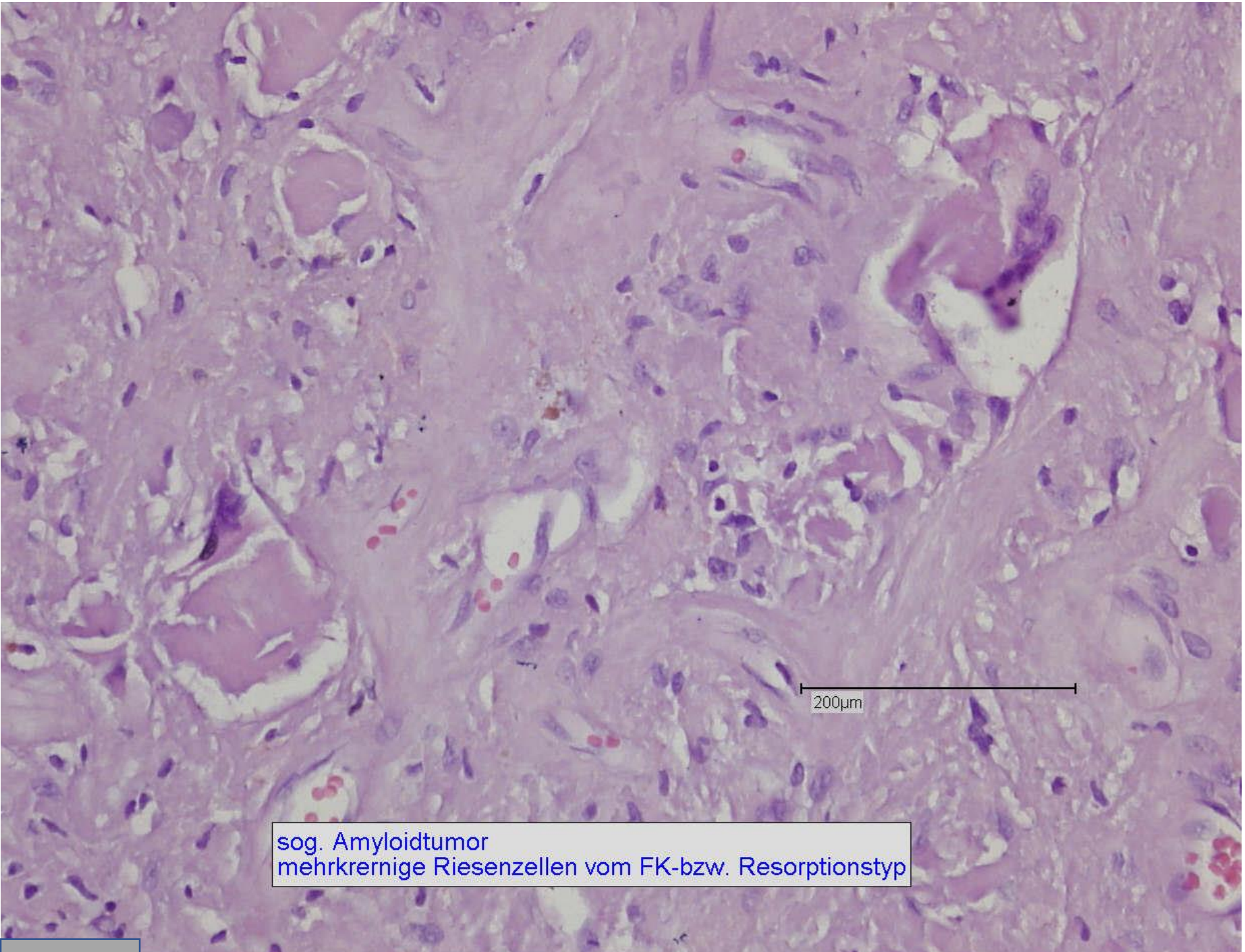
Amyloidtumor
Unterarm



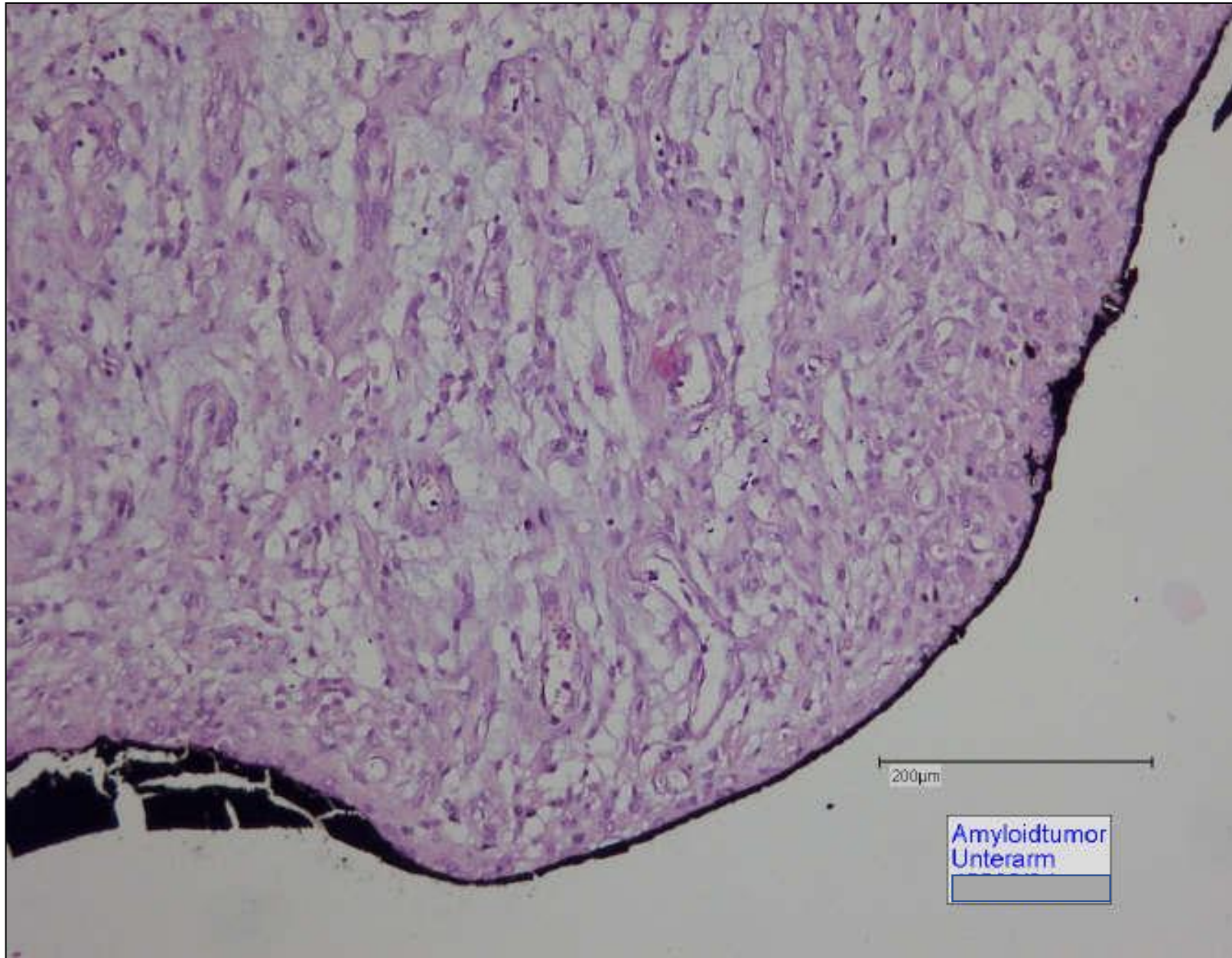


Amyloidtumor
Unterarm





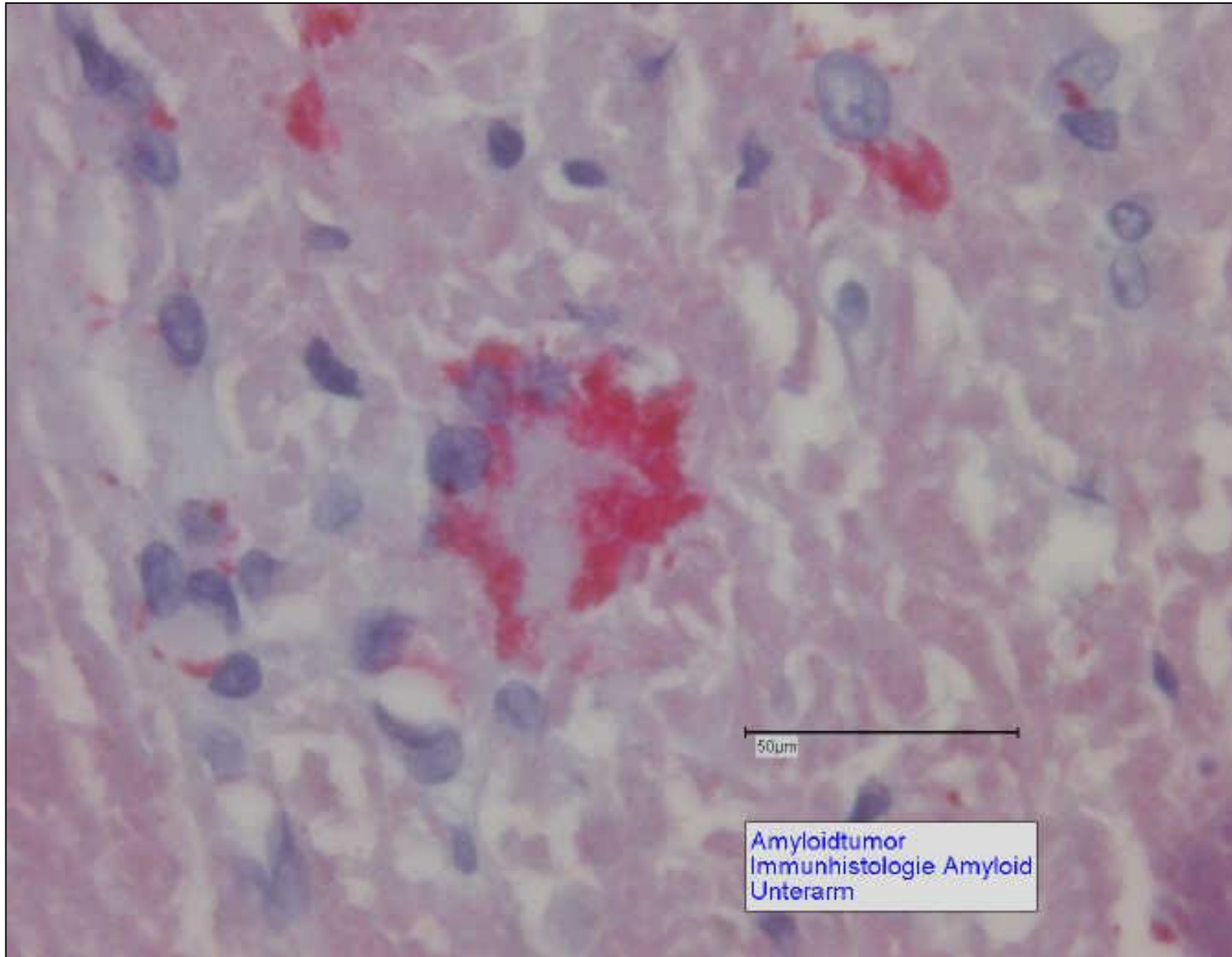
sog. Amyloidtumor
mehrkernige Riesenzellen vom FK-bzw. Resorptionstyp



200µm

Amyloidtumor
Unterarm

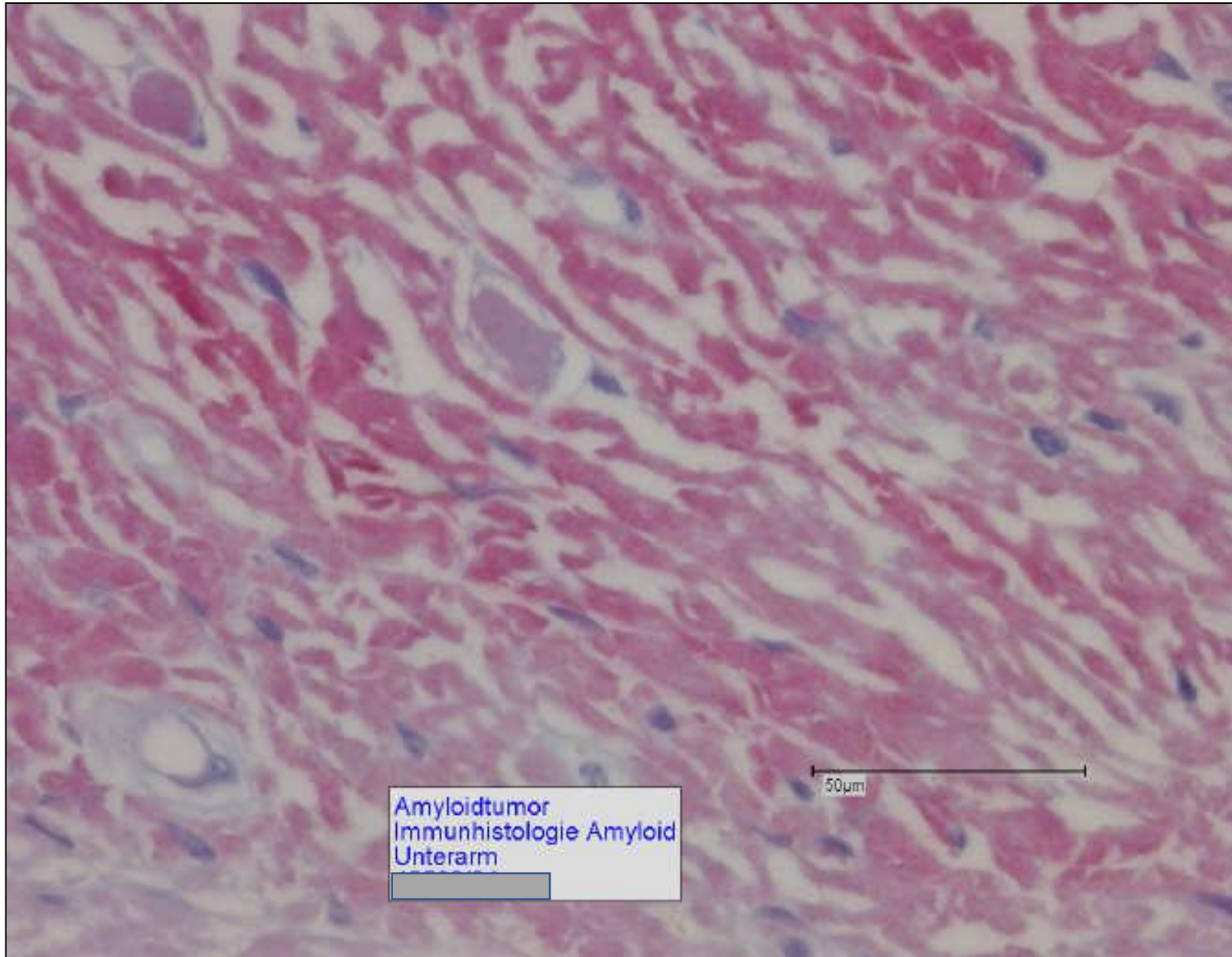




50µm

Amyloidtumor
Immunhistologie Amyloid
Unterarm

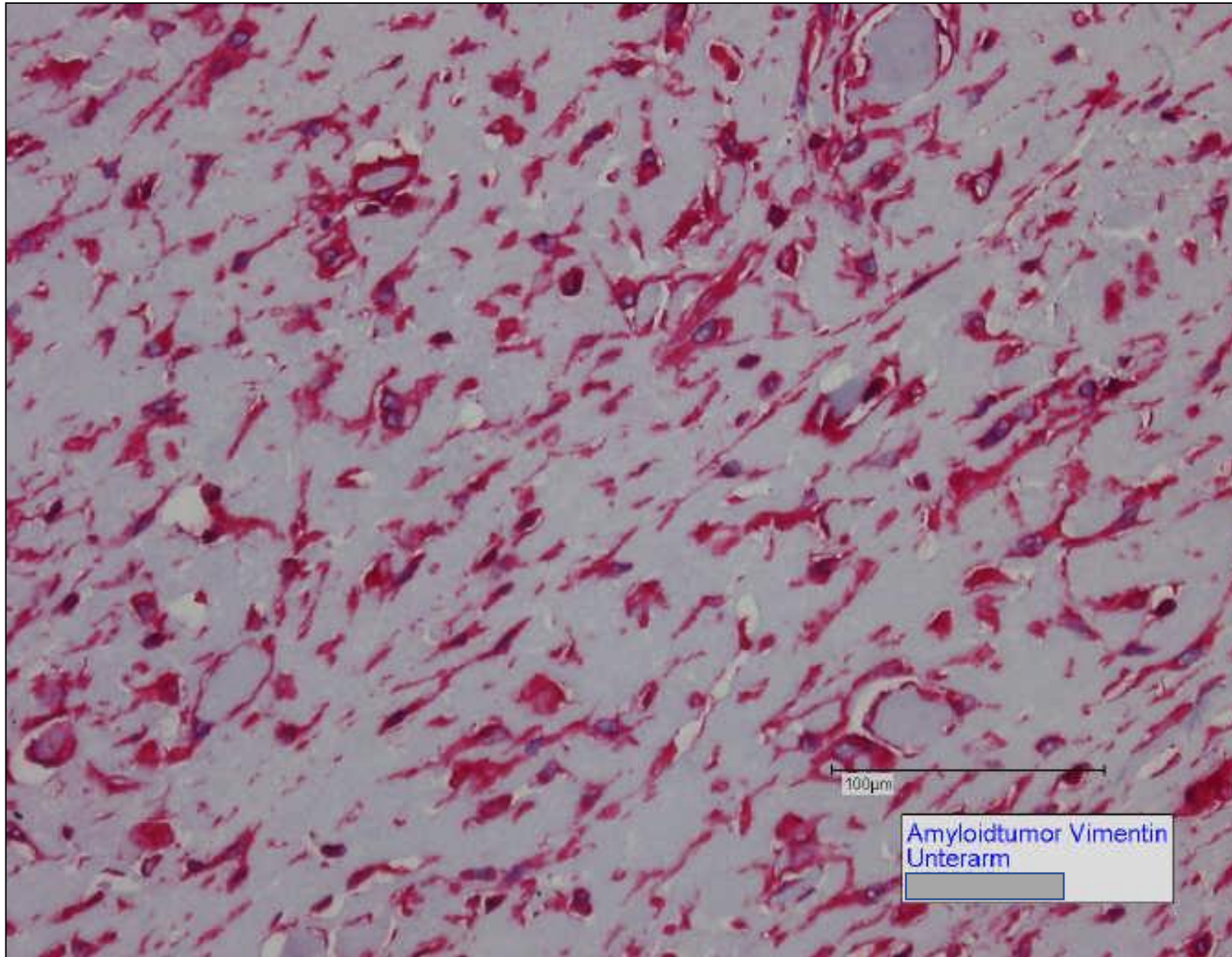




Amyloidtumor
Immunhistologie Amyloid
Unterarm

50µm

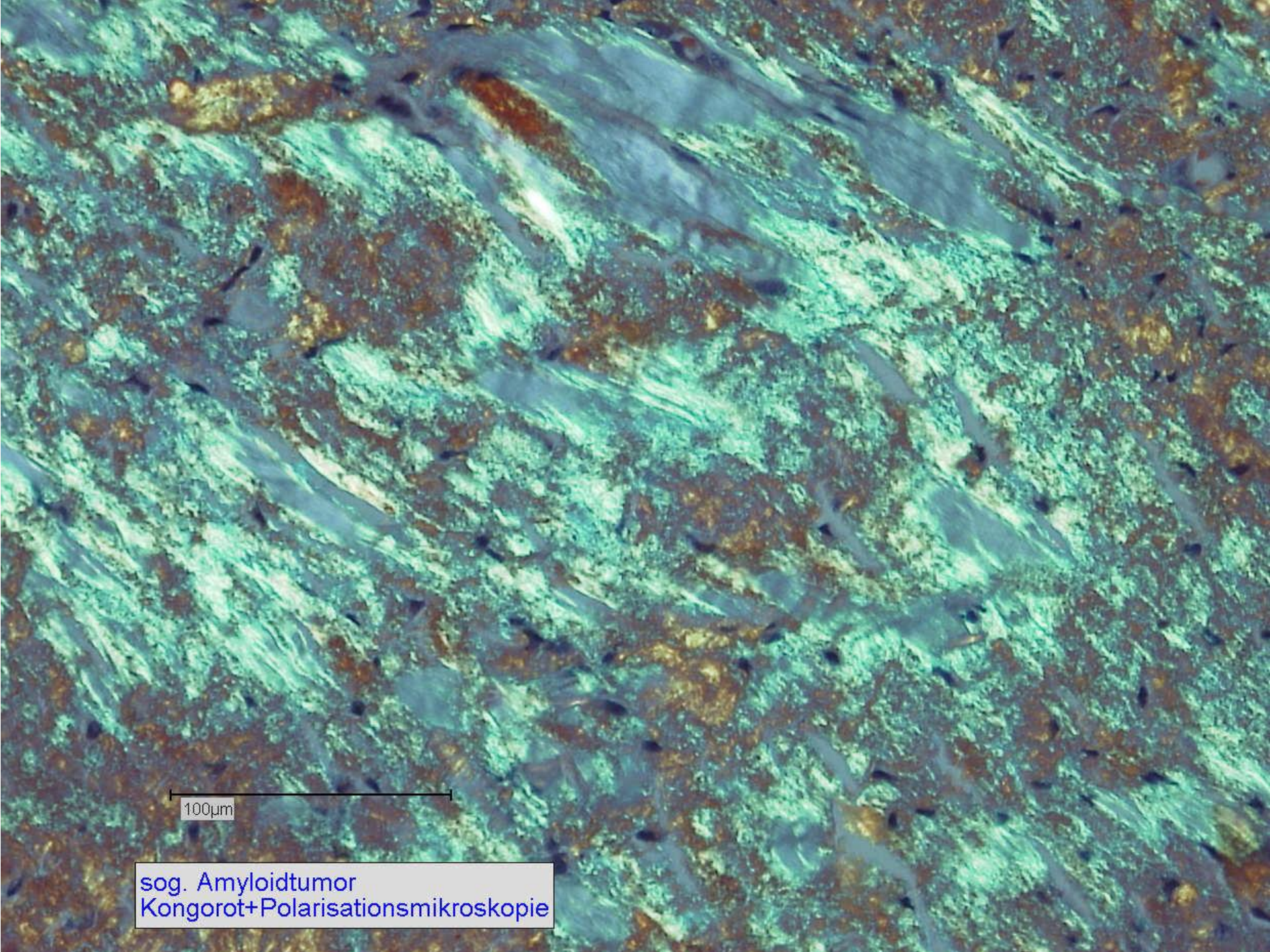




100µm

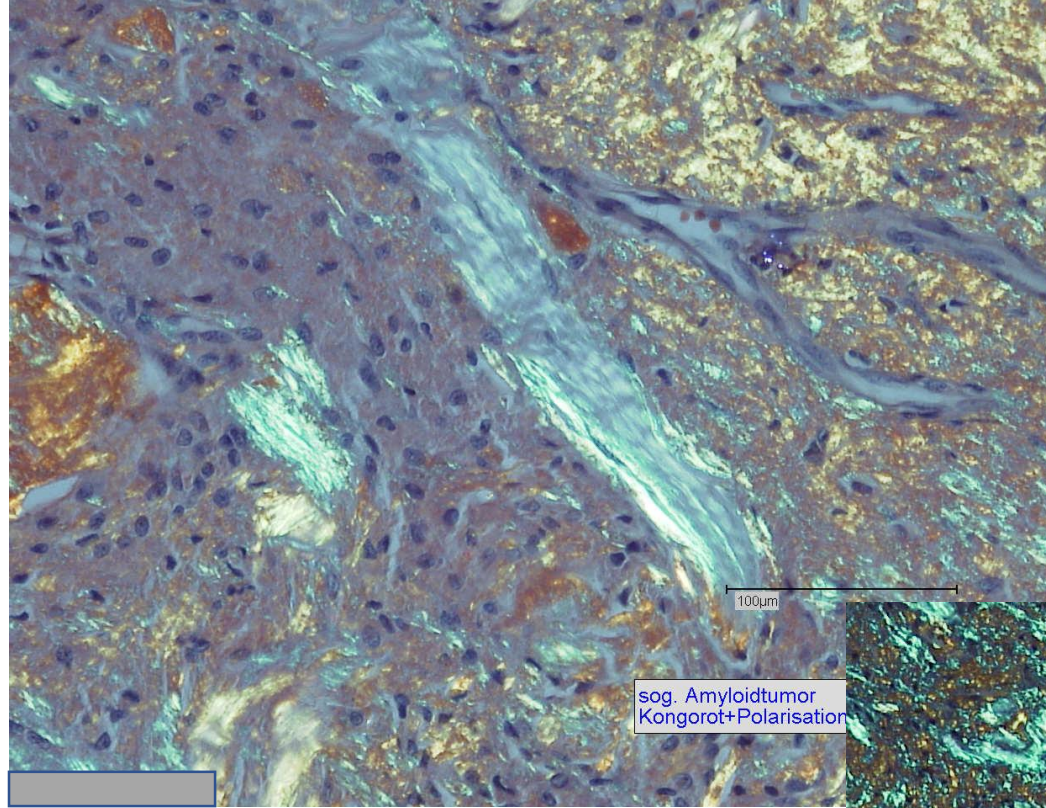
Amyloidtumor Vimentin
Unterarm



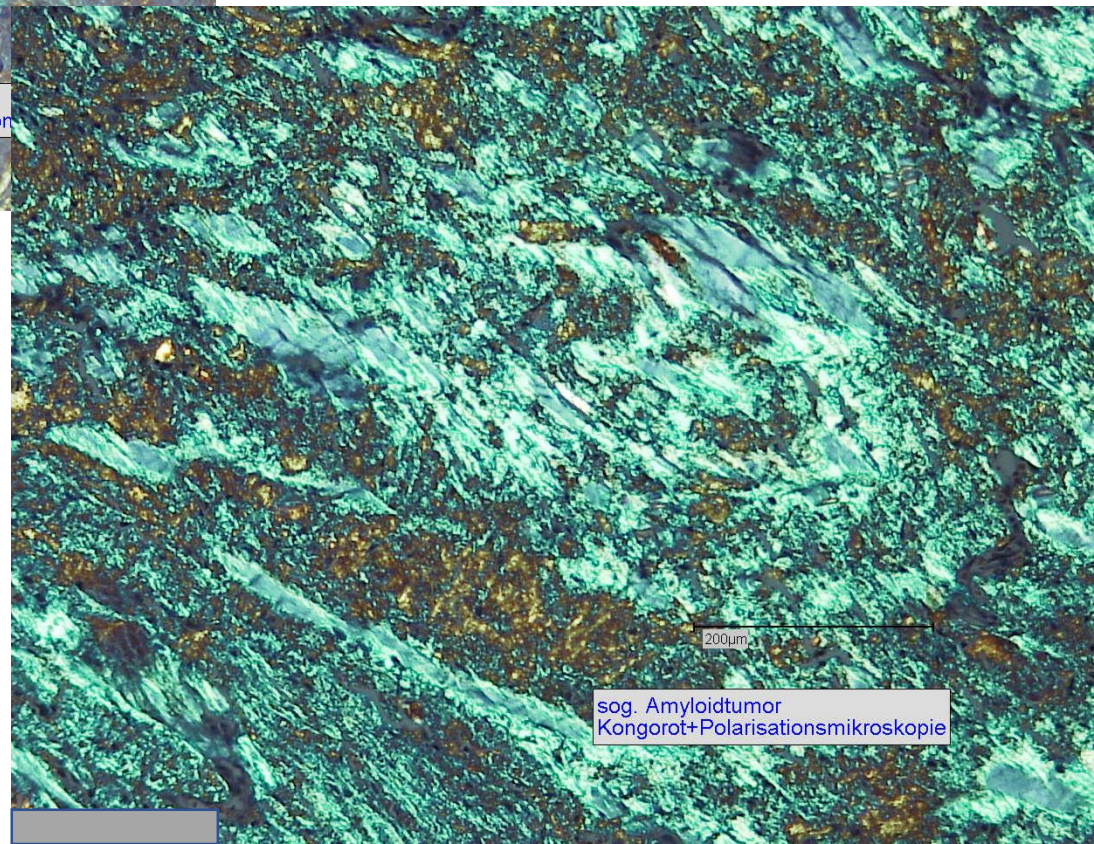


100µm

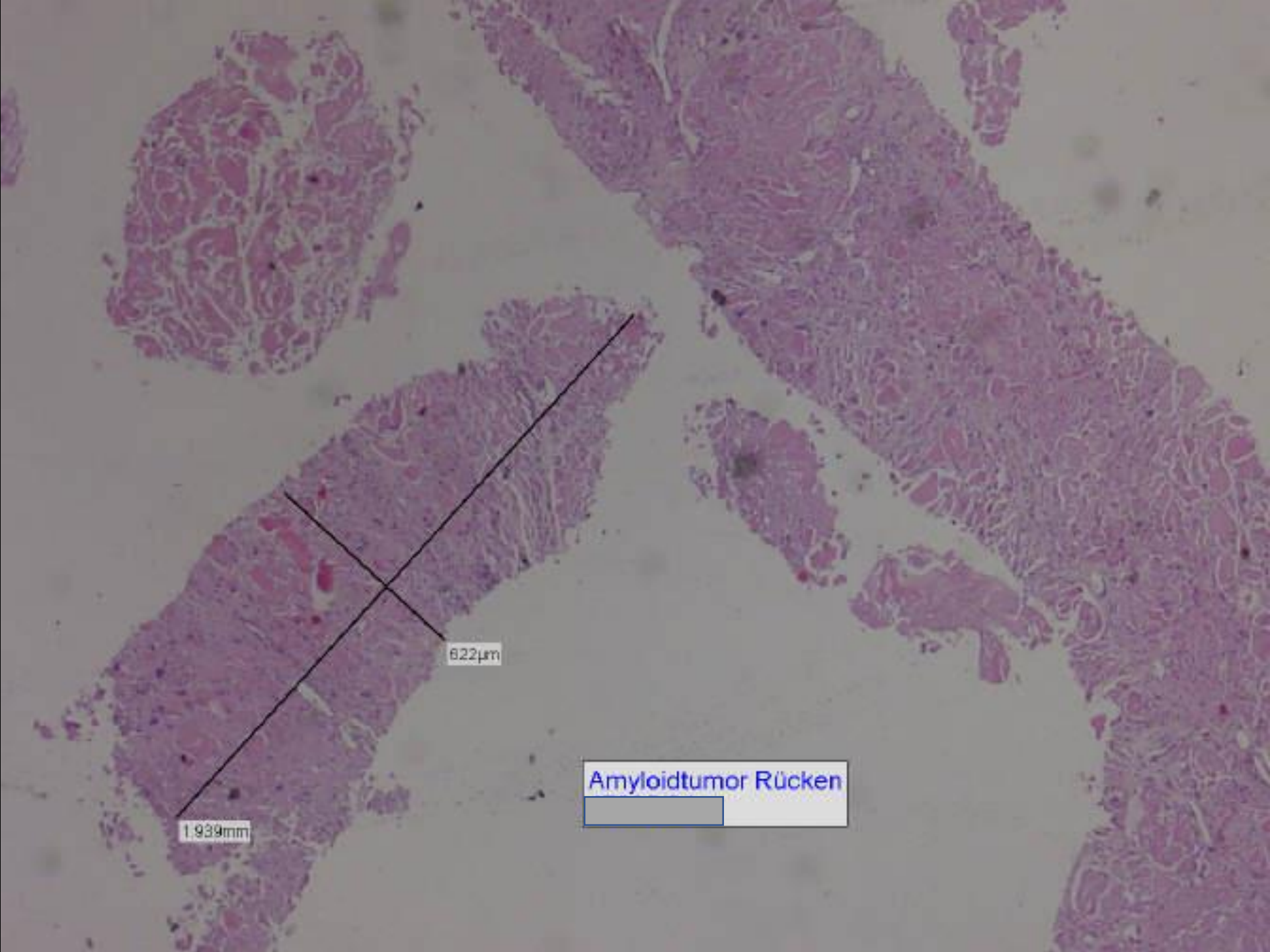
sog. Amyloidtumor
Kongorot+Polarisationsmikroskopie



sog. Amyloidtumor
Kongorot+Polarisation



sog. Amyloidtumor
Kongorot+Polarisationsmikroskopie



Amyloidtumor Rücken



1.939mm

622µm

